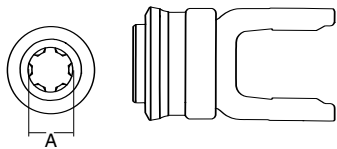
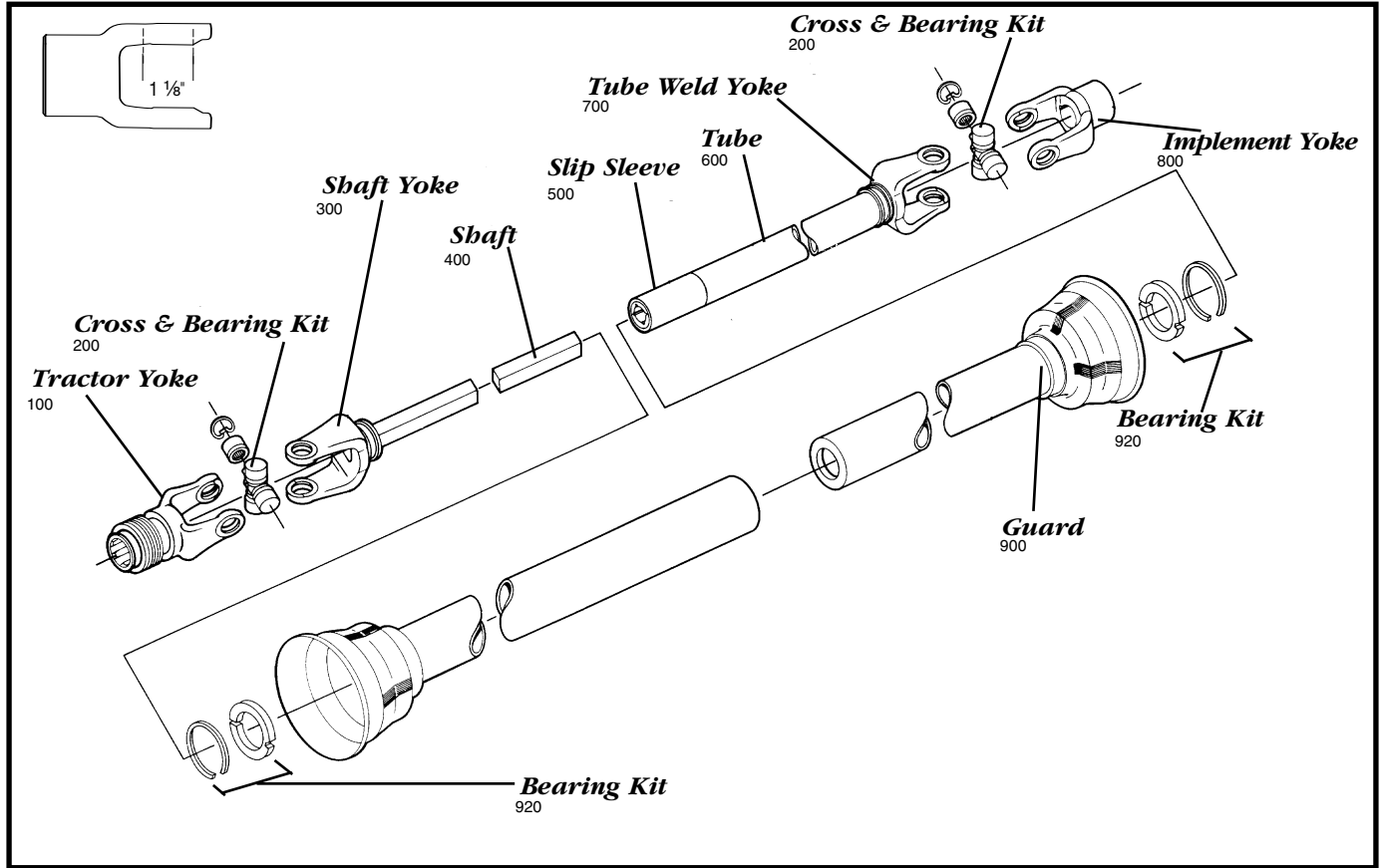


AGRICULTURAL PARTS

14 SERIES



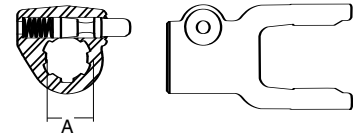
**Tractor Yoke
Spring-Lok**

SPECIFICATIONS

RB&H #	REFERENCE #	DIM. "A" BORE (IN.)
100-1406	14R220-20-SL	1 3/8 x 6
100-1421	14R220-TQD-SL	1 3/8 x 21
101-1420	-	1 3/4 x 20

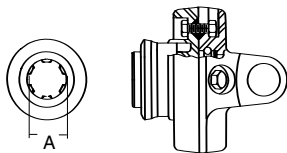
Repair kit — page 200

Quick Disconnect



SPECIFICATIONS

RB&H #	REFERENCE #	DIM. "A" BORE (IN.)
102-1406	14R220-20	1 3/8 x 6
102-1421	14R220-TQD	1 3/8 x 21



Ball Shear Device

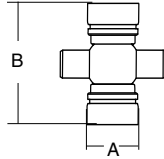
SPECIFICATIONS

RB&H #	REFERENCE #	DIM. "A" BORE (IN.)	SHEAR BOLT (IN.)
104-1406	14R220-20-BS	1 3/8 x 6	5/16 -18 Gr. 5
104-1421	14R220-TQD-BS	1 3/8 x 21	5/16 -18 Gr. 5

AGRICULTURAL PARTS

14 SERIES

Cross & Bearing Kit



SPECIFICATIONS			
RB&H #	REFERENCE #	DIM. "A" BORE (IN.)	DIM. "B" BORE (IN.)
200-1400	1-2075	14R	1 1/8
201-1400	Extended Life	-	1 1/8

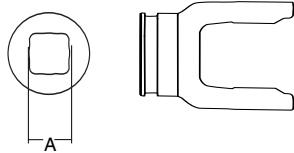
Tube



1 1/4" x 1 3/8" Rectangular O.D.

SPECIFICATIONS			
RB&H #	REFERENCE #	LENGTH (FT.)	FITS SHAFT (IN.)
600-2022	A1200	6	1 x 1 1/8

Shaft Weld Yoke



SPECIFICATIONS		
RB&H #	REFERENCE #	DIM. "A" BORE (IN.)
300-1400	14RWY1618	1 x 1 1/8

With bearing groove

2" Round (.083 Wall)



SPECIFICATIONS		
RB&H #	REFERENCE #	LENGTH (FT.)
602-1400	14RTT	6

Shaft

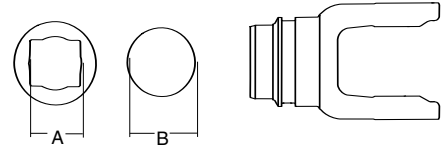


1" x 1 1/8" Rectangular

SPECIFICATIONS			
RB&H #	REFERENCE #	LENGTH (FT.)	SHAPE
400-1618	B1200	6	Rectangle
			Round

Use with Shaft Weld Yoke

Tube Weld Yoke

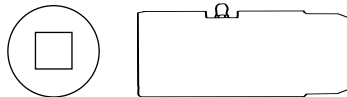


SPECIFICATIONS			
RB&H #	REFERENCE #	DIM. "A" BORE (IN.)	SHAPE
700-1400	14RWY2022	1 1/4 x 1 3/8	Rectangle
701-1400	14RWY1834	-	Round

With bearing groove

Slip Sleeve

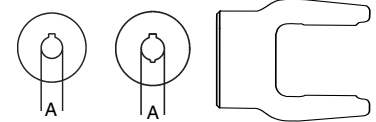
1" x 1 1/8" Rectangular



SPECIFICATIONS			
RB&H #	REFERENCE #	LENGTH (IN.)	FITS TUBE SIZE (IN.)
500-1400	12-14RS06	5	2 (.083 Wall)

With grease groove

Implement Yoke



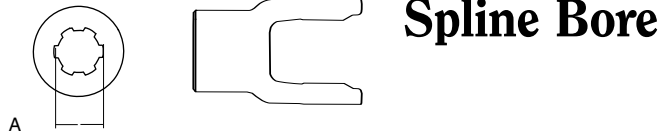
SINGLE* DOUBLE

Round Bore

SPECIFICATIONS		
RB&H #	DIM. "A" BORE (IN.)	KEYWAY
800-1416*	1	1/4
806-1418	1 1/8	1/4 & 5/16
806-1419	1 3/16	1/4 & 5/16
806-1420	1 1/4	1/4 & 5/16
800-1422*	1 3/8	5/16
800-1423*	1 7/16	3/8
800-1424*	1 1/2	3/8

AGRICULTURAL PARTS

14 SERIES



Spline Bore

SPECIFICATIONS		
RB&H #	REFERENCE #	DIM. "A" BORE (IN.)
801-1418	14R180-21	1 1/8 x 6
801-1406	14R220-21	1 3/8 x 6
801-1420	14R200-21	1 1/4 x 6
801-1421	14R220-T	1 3/8 x 21

With 2 1/4" pin hole

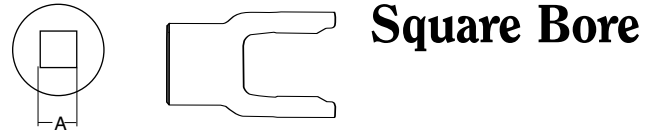


Shear Pin

SPECIFICATIONS		
RB&H #	REFERENCE #	DIM. "A" BORE (IN.)
802-1418	14R180-7	1 1/8
802-1420	14R200-7	1 1/4
802-1422*	14R220-7	1 3/8
802-1424	14R240-7	1 1/2

With 1/4" pin hole

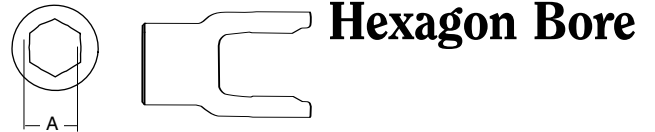
* With 1/4" and 1/2" pin hole



Square Bore

SPECIFICATIONS		
RB&H #	REFERENCE #	DIM. "A" BORE (IN.)
804-1414	14R140-26	7/8
804-1416	14R160-26	1
804-1418	14R180-26	1 1/8
804-1419	14R190-26	1 3/16
804-1420	14R200-26	1 1/4

With set screw



Hexagon Bore

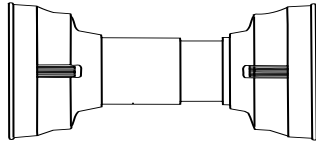
SPECIFICATIONS		
RB&H #	REFERENCE #	DIM. "A" BORE (IN.)
805-1420	14R200-H	1 1/4

With set screw

AGRICULTURAL PARTS

14 SERIES

Guard



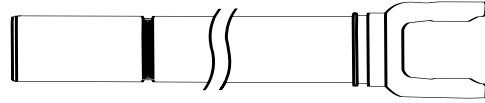
Plastic Guard

SPECIFICATIONS	
RB&H #	OVERALL DRIVELINE LENGTH (IN.)
900-2548	48
900-2560	60

NOTE: When installing bearings (921-1200) guards observe the following:

- 1) Install proper nylon bearing and retainer
- 2) Check to insure guards turn freely on bearing

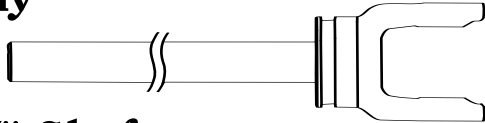
Yoke, Tube & Sleeve Assembly



1" x 11 1/8" Rectangular

SPECIFICATIONS		
RB&H #	REFERENCE #	CENTER TO END OF TUBE DIMENSION
11001438	14R38F	26.12
11001448	14R48F	35.12

Yoke & Shaft Assembly



1" x 1 1/8" Shaft

SPECIFICATIONS		
RB&H #	REFERENCE #	CENTER TO END OF SHAFT DIMENSION
10001438	14R38M	26.12
10001448	14R48M	35.62