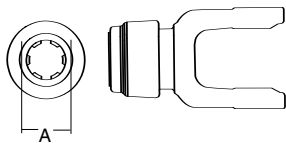
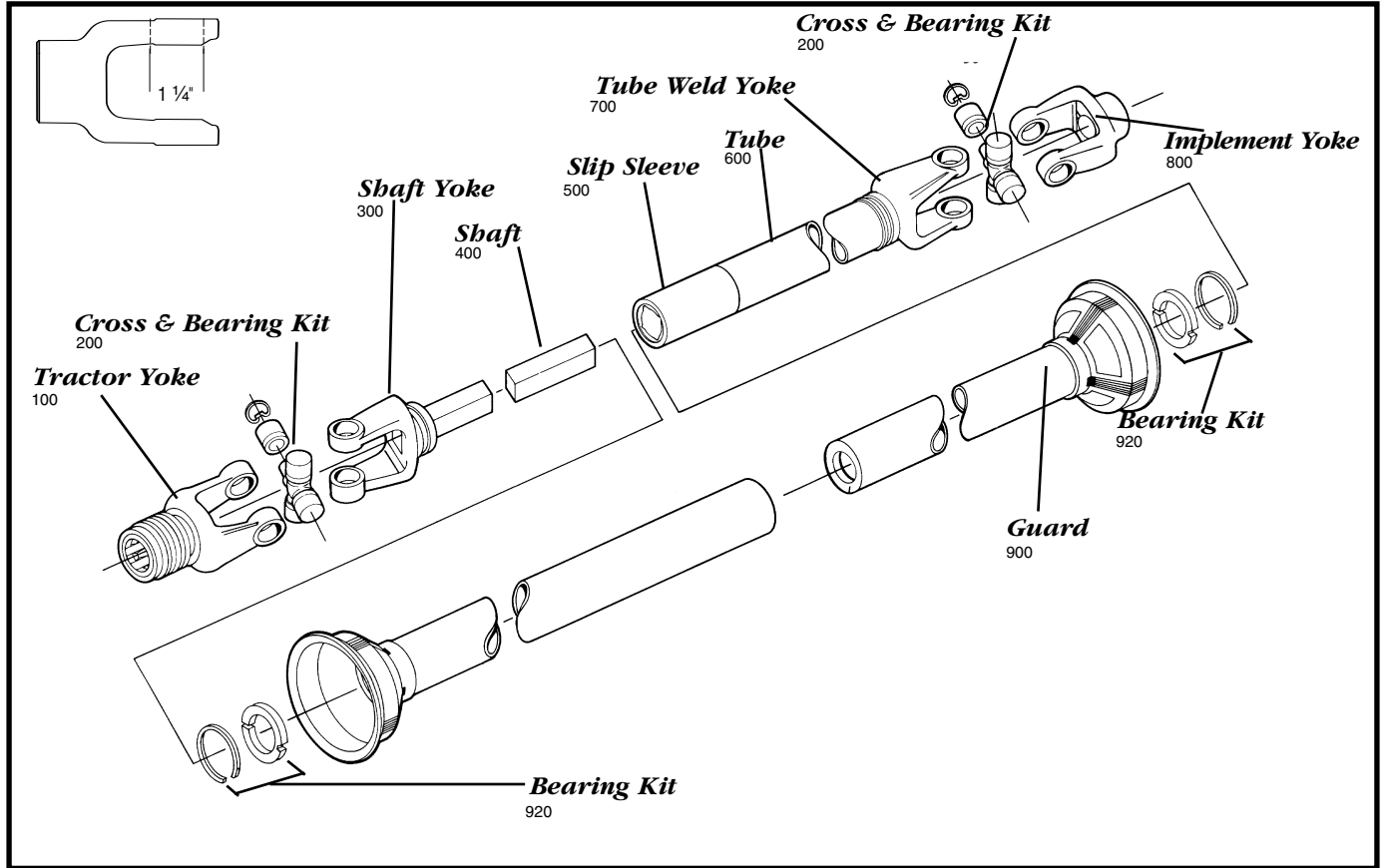


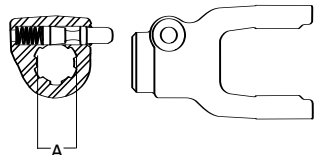
AGRICULTURAL PARTS

35 SERIES



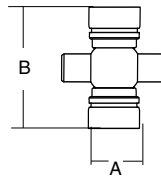
**Tractor Yoke
Safety Slide
Lock**

SPECIFICATIONS		
RB&H #	REFERENCE #	DIM. "A" BORE (IN.)
101-3506	35R220-20-SS	1 3/8 x 6
101-3521	35R220-TQD-SS	1 3/8 x 21
101-3520	-	1 3/4 x 20



**Quick
Disconnect**

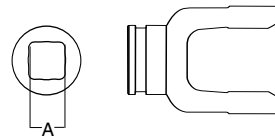
SPECIFICATIONS		
RB&H #	REFERENCE #	DIM. "A" BORE (IN.)
102-3506	35R220-20	1 3/8 x 6
102-3521	35R220-TQD	1 3/8 x 21
102-3520	102-3520	1 3/4 x 20



**Cross & Bearing
Kit**

SPECIFICATIONS			
RB&H #	REFERENCE #	DIM. "A" BORE (IN.)	DIM. "B" BORE (IN.)
200-3500	35R	1 1/4	3 7/32
201-3500	Extended Life	1 1/4	3 7/32

Snap ring located in yoke



**Shaft Weld
Yoke**

SPECIFICATIONS		
RB&H #	REFERENCE #	DIM. "A" BORE (IN.)
300-3500	35RVVY1900	1 3/16 sq.

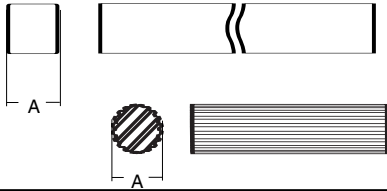
With bearing groove

Repair kit — page 200

AGRICULTURAL PARTS

35 SERIES

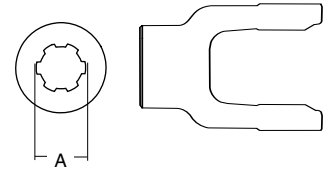
Shaft



SPECIFICATIONS				
RB&H #	REFERENCE #	DIM. "A" BORE (IN.)	LENGTH (IN.)	SHAPE
400-0019	B1187	1 3/16	6	Square
404-2720	-	1 11/16 x 20	3	Round

Implement Yoke

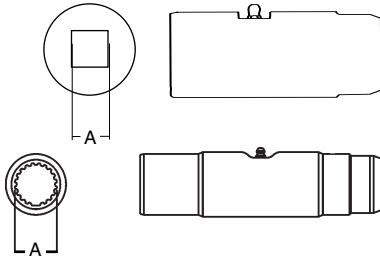
Spline Bore



SPECIFICATIONS		
RB&H #	REFERENCE #	DIM. "A" BORE (IN.)
801-3506	35R220-21	1 3/8 x 6
801-3521	35R220-T	1 3/8 x 21

With 2 5/16" pin hole

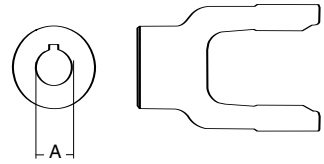
Slip Sleeve



SPECIFICATIONS					
RB&H #	REFERENCE #	LENGTH (IN.)	DIM. "A" BORE (IN.)	FITS TUBE SIZE (IN.)	SHAPE
500-3500	35RS06	5	1 3/16	2 1/8 (.120 Wall)	Square
503-3500	-	8	1 11/16 x 20	2 1/2 (.120 Wall)	Round

With grease groove

Shear Pin

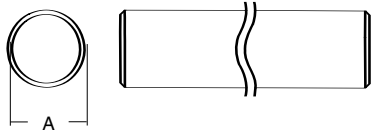


SPECIFICATIONS		
RB&H #	REFERENCE #	DIM. "A" BORE (IN.)
802-3520	35R200-7	1 1/4
802-3522*	35R220-7	1 3/8
802-3524	35R240-7	1 1/2

With 1/4" pin hole

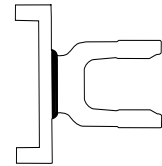
* With 1/2" pin hole

Tube



SPECIFICATIONS			
RB&H #	REFERENCE #	DIM. "A" BORE (IN.)	LENGTH (FT.)
602-3500	35RTT	2 1/8 (.120 Wall)	6

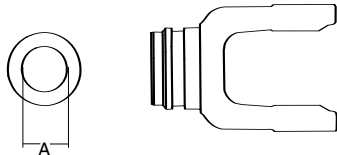
Torque Limiter Flange



SPECIFICATIONS	
RB&H #	REFERENCE #
803-3500	35R-NTL

(Interchanges with Great Lakes clutch)

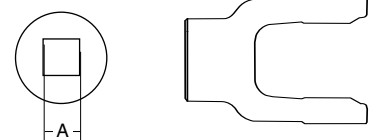
Tube Weld Yoke



SPECIFICATIONS		
RB&H #	REFERENCE #	FITS TUBE SIZE "A" (IN.)
701-3500	35RWY1885	2 1/8 (.120 Wall)

With bearing groove (Guard must rotate freely on yoke)

Square Bore

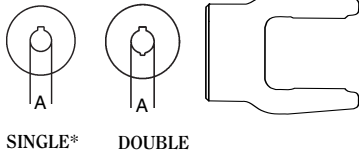


SPECIFICATIONS		
RB&H #	REFERENCE #	DIM. "A" BORE (IN.)
804-3516	35R160-26	1
804-3518	35R180-26	1 1/8
804-3519	35R190-26	1 3/16
804-3520	35R200-26	1 1/4
804-3526	35R260-26	1 5/8

With set screw

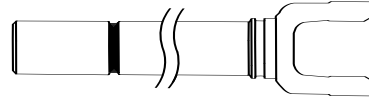
AGRICULTURAL PARTS

35 SERIES



**Round Bore
Keyway &
Set Screw**

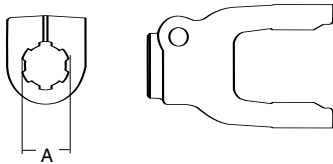
**Yoke, Tube & Sleeve Assembly
1 3/16" Square**



SPECIFICATIONS		
RB&H #	DIM. "A" BORE (IN.)	KEYWAY (IN.)
800-3516*	1	1/4
800-3518*	1	1/4
800-3519*	1	1/4
806-3520	1	1/4 & 5/16
806-3522	1	5/16 & 3/8
800-3523*	1	3/8
800-3524*	1	3/8
800-3526*	1	3/8
800-3528*	1	3/8

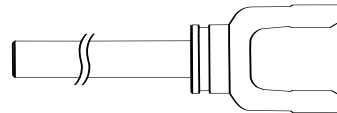
SPECIFICATIONS		
RB&H #	REFERENCE #	CENTERLINE TO END OF TUBE DIMENSION (IN.)
11003548	35R48F	34.69

* single keyway



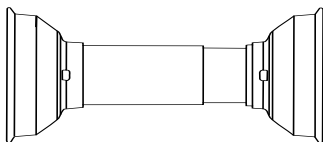
Clamp Yoke

**Yoke & Shaft Assembly
1 3/16" Square**



SPECIFICATIONS	
RB&H #	DIM. "A" BORE (IN.)
807-3520	1 3/4 x 20 Spline
807-3521	1 3/8 x 21 Spline

SPECIFICATIONS		
RB&H #	REFERENCE #	CENTERLINE TO END OF SHAFT DIMENSION (IN.)
10003548	35R48M	33.19



**Guard
Plastic Guard**

SPECIFICATIONS	
RB&H #	OVERALL DRIVELINE LENGTH (IN.)
900-2548	48
900-2560	60

NOTE: When installing bearings 921-1200 guards observe the following:

- 1) Install proper nylon bearing and retainer
- 2) Check to insure guards turn freely on bearing