

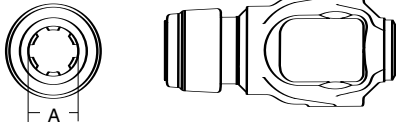
AGRICULTURAL PARTS

CONSTANT VELOCITY 80° DOMESTIC

** for Weasler Brand only*

Tractor Yoke

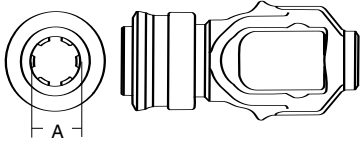
Safety Slide Lock



SPECIFICATIONS

RB&H #	SERIES	DIM. "A" BORE (IN.)
107-3506	35/44	1 3/8 x 6
107-3521	35/44	1 3/8 x 21
107-5506	55	1 3/8 x 6
107-5521	55	1 3/8 x 21

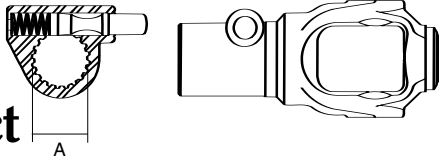
Spring-Lock



SPECIFICATIONS

RB&H #	SERIES	DIM. "A" BORE (IN.)
108-1406	14	1 3/8 x 6
108-1421	14	1 3/8 x 21

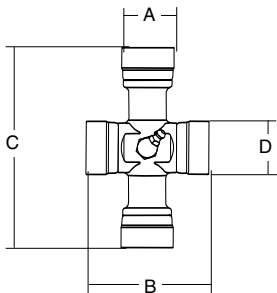
Quick-Disconnect



SPECIFICATIONS

RB&H #	SERIES	DIM. "A" BORE (IN.)
109-3506	35/44	1 3/4 x 6
109-3520	35/44	1 3/4 x 20
109-5520	55	1 3/4 x 20

Cross & Bearing Kit



SPECIFICATIONS

RB&H #	REFERENCE #	DIM. "A" BORE (IN.)	DIM. "B" BORE (IN.)	DIM. "C" BORE (IN.)	DIM. "D" BORE (IN.)
200-1430	14RCV	1 1/8	2 5/8	4 1/4	-
200-3545	35RCV	1 1/4	3 7/32	4 5/16	-
200-5556	55RCV	1 5/16	4 5/16	3 47/64	1 17/32

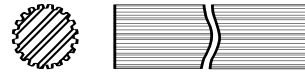
Shaft



1" x 1 1/8" Rectangular

SPECIFICATIONS

RB&H #	REFERENCE #	SERIES	LENGTH (FT.)
400-1618	B1200	14	6

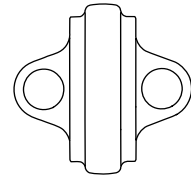


1 11/16" x 20 Spline (induction hardness)

SPECIFICATIONS

RB&H #	SERIES	LENGTH
404-2720	35/44/55	3

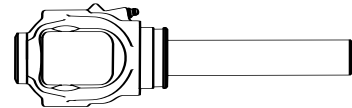
Center Housing



SPECIFICATIONS

RB&H #	SERIES
550-1430	14
550-3545	35/44
550-5556	55

Yoke Tube Assembly



SPECIFICATIONS

RB&H #	SERIES	SHAFT SIZE (IN.)	DIM. "A" SHAFT LENGTH (IN.)
10101400	14	1 x 1 1/8 Rectangular	27 1/4
10103500	35/44	1 11/16 x 20 Spline	27
10105500	55	1 11/16 x 20 Spline	27

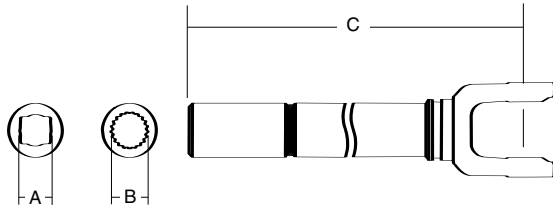
Fits all corresponding series tube assemblies

AGRICULTURAL PARTS

CONSTANT VELOCITY 80° DOMESTIC

* for Weasler Brand only

Yoke Tube & Sleeve Assembly

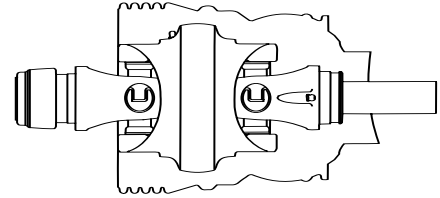


SPECIFICATIONS

RB&H #	SERIES	DIM. "A" BORE (IN.)	DIM. "B" BORE (IN.)	OVERALL DRIVELINE LENGTH (IN.)	DIM "C" CL TO END OF SLEEVE (IN.)
11101448	14	1 x 1 1/8 Rectangular	-	48	31 5/8
11101467	14	1 x 1 1/8 Rectangular	-	67	50 5/8
11103548	35	-	1 11/16 x 20 Spline	48	29 1/4
11103567	35	-	1 11/16 x 20 Spline	67	48 1/4
11103579	35	-	1 11/16 x 20 Spline	79	58 1/4
11104448	44	-	1 11/16 x 20 Spline	48	28 7/8
11104467	44	-	1 11/16 x 20 Spline	67	47 7/8
11104479	44	-	1 11/16 x 20 Spline	79	59 7/8
11105548	55	-	1 11/16 x 20 Spline	48	28 7/8
11105567	55	-	1 11/16 x 20 Spline	67	47 7/8
11105579	55	-	1 11/16 x 20 Spline	79	59 7/8

* CL = centerline

Constant Velocity Joint & Shaft Half with Guard

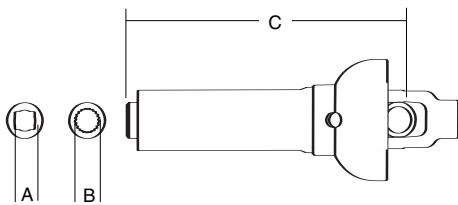


SPECIFICATIONS

RB&H #	SERIES	SHAFT SIZE (IN.)	SHAFT LENGTH (IN.)	TRACTOR YOKE (IN.)
16501406	14	1 x 1 1/8 Rectangular	27 1/4	1 3/8 x 6
16601421	14	1 x 1 1/8 Rectangular	27 1/4	1 3/8 x 21
16503506	35/44	1 11/16 x 20 Spline	27	1 3/8 x 6
16603521	35/44	1 11/16 x 20 Spline	27	1 3/8 x 21
16703520	35/44	1 11/16 x 20 Spline	27	1 3/4 x 20
16505506	55	1 11/16 x 20 Spline	27	1 3/8 x 6
16605521	55	1 11/16 x 20 Spline	27	1 3/8 x 21
16705520	55	1 11/16 x 20 Spline	27	1 3/4 x 20

Fits all corresponding yoke, tube & sleeve assemblies

Yoke Tube & Sleeve with Guard

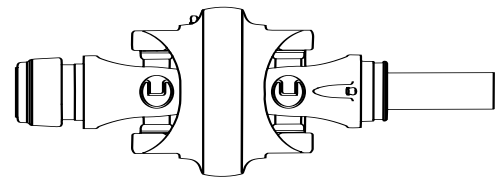


SPECIFICATIONS

RB&H #	SERIES	DIM. "A" BORE (IN.)	DIM. "B" BORE (IN.)	DIM "C" CL TO END OF SLEEVE (IN.)	OVERALL DRIVELINE LENGTH (IN.)
17501448	14	1 x 1 1/8 Rectangular	-	31 5/8	48
17501467	14	1 x 1 1/8 Rectangular	-	50 5/8	67
17503548	35	-	1 11/16 x 20 Spline	29 1/4	48
17503567	35	-	1 11/16 x 20 Spline	48 1/4	67
17503579	35	-	1 11/16 x 20 Spline	58 1/4	79
17504448	44	-	1 11/16 x 20 Spline	28 7/8	48
17504467	44	-	1 11/16 x 20 Spline	47 7/8	67
17504479	44	-	1 11/16 x 20 Spline	59 7/8	79
17505548	55	-	1 11/16 x 20 Spline	28 7/8	48
17505567	55	-	1 11/16 x 20 Spline	47 7/8	67
17505579	55	-	1 11/16 x 20 Spline	59 7/8	79

* CL = centerline

Constant Velocity Joint & Shaft



SPECIFICATIONS

RB&H #	SERIES	SHAFT SIZE (IN.)	SHAFT LENGTH (IN.)	TRACTOR YOKE (IN.)
15501406	14	1 x 1 1/8 Rectangular	27 1/4	1 3/8 x 6
15601421	14	1 x 1 1/8 Rectangular	27 1/4	1 3/8 x 21
15503506	35/44	1 11/16 x 20 Spline	27	1 3/8 x 6
15603521	35/44	1 11/16 x 20 Spline	27	1 3/8 x 21
15703520	35/44	1 11/16 x 20 Spline	27	1 3/4 x 20
15505506	55	1 11/16 x 20 Spline	27	1 3/8 x 6
15605521	55	1 11/16 x 20 Spline	27	1 3/8 x 21
15705520	55	1 11/16 x 20 Spline	27	1 3/4 x 20

Fits all corresponding series tube assemblies

To order by phone: **1-800-669-9650**

To order by fax: **1-800-736-0141**