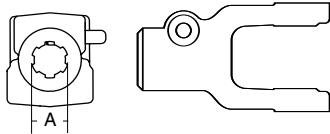
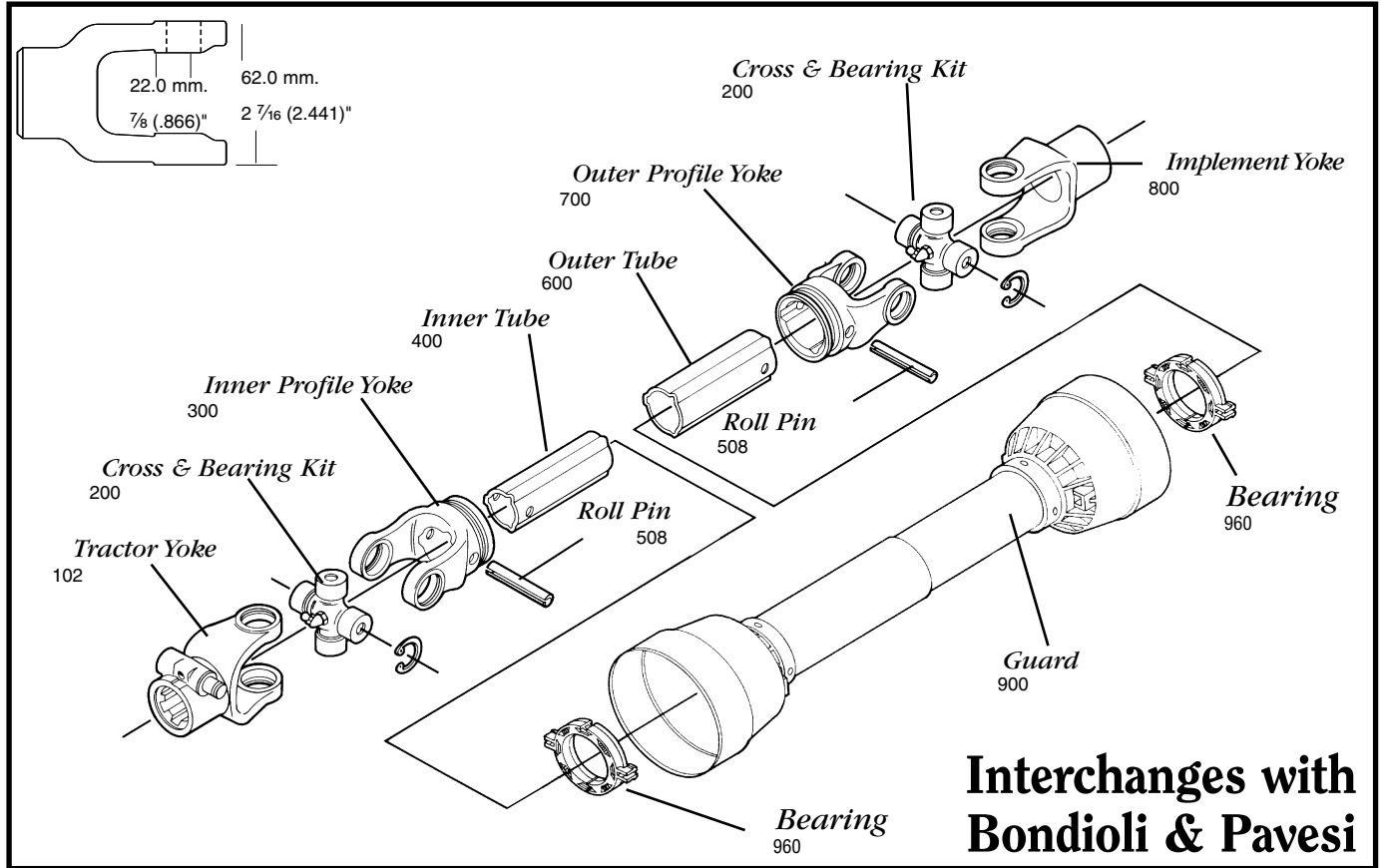


AGRICULTURAL PARTS

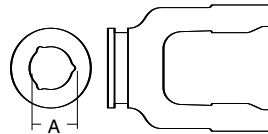
1 SERIES METRIC



SPECIFICATIONS	
RB&H #	DIM. "A" BORE (IN.)
102-6106	1 3/8 x 6
102-6121	1 3/8 x 21

SPECIFICATIONS	
RB&H #	DIM. "A" BORE (IN.)
572010351	1 3/8 x 6
572010751	1 3/8 x 21

Tractor Yoke
Quick Disconnect
Ball Collar Style



SPECIFICATIONS			
RB&H #	BONDIOLI #	DIM. "A" BORE (MM.)	DIM. "A" BORE (IN.)
300-6126	204016852	27.5	1 1/8

With bearing groove

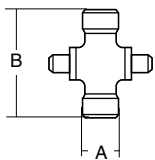
Inner Profile Yoke



SPECIFICATIONS		
RB&H #	LENGTH (MM.)	LENGTH (IN.)
400-6126	1,500	59 1/16
404-6126	1,000	39 3/8

26.0 (3.5 Wall) mm.
1 1/2 (1/8 Wall) inch
1.024 (.138 Wall) inch

Inner Tube



SPECIFICATIONS					
RB&H #	BONDIOLI #	DIM "A" (MM.)	DIM "A" (IN.)	DIM "B" (MM.)	DIM. "B" (IN.)
200-6154	41201	22.0	7/8 (.866)	54.0	2 1/8 (2.126)
201-6154	Extended Life	22.0	7/8 (.866)	54.0	2 1/8 (2.126)

Snap ring located in yoke

Cross & Bearing Kit

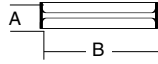
To order by phone: **1-800-669-9650**

To order by fax: **1-800-736-0141**

AGRICULTURAL PARTS

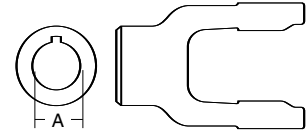
1 SERIES METRIC

Roll Pin



SPECIFICATIONS				
RB&H #	DIM "A" BORE (MM.)	DIM "A" BORE (IN.)	DIM "B" (MM.)	DIM "B" (IN.)
508-0850	8.0	5/16 (.315)	50.0	1 31/32 (1.96)

Implement Yoke



Round Bore

SPECIFICATIONS				
RB&H #	DIM "A" BORE (MM.)	DIM "A" BORE (IN.)	STANDARD KEYWAY (MM.)	STANDARD KEYWAY (IN.)
800-6108	25.4	1 (1.0)	6.35	1/4 (.250)
800-6110	31.75	1 1/4 (1.250)	6.35	1/4 (.250)

With keyway & set screw

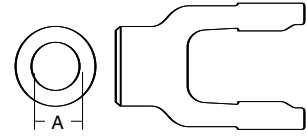
Outer Tube



SPECIFICATIONS		
RB&H #	LENGTH (M.)	LENGTH (IN.)
600-6133	1.5	59 1/16
604-6133	1.0	39 3/8

33.0 (2.6 Wall) mm.
1 5/16 (3/32 Wall)"
1.299 (.102 Wall)"

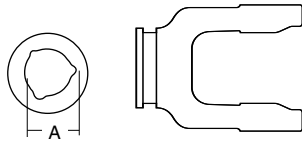
Shear Pin



SPECIFICATIONS		
RB&H #	LENGTH (MM.)	LENGTH (IN.)
802-6110	31.75	1 1/4 (1.250)

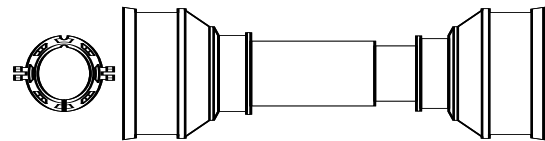
With pin hole

Outer Profile Yoke



SPECIFICATIONS			
RB&H #	REFERENCE #	DIM. "A" BORE (IN.)	DIM. "B" BORE (IN.)
700-6133	204016851	33.0	1 5/16 (1.299)

With bearing groove



Plastic Guard

SPECIFICATIONS	
RB&H #	LENGTH (IN.)
900-2548	48
900-2560	60

Bearings 961-5029 (2 per kit)