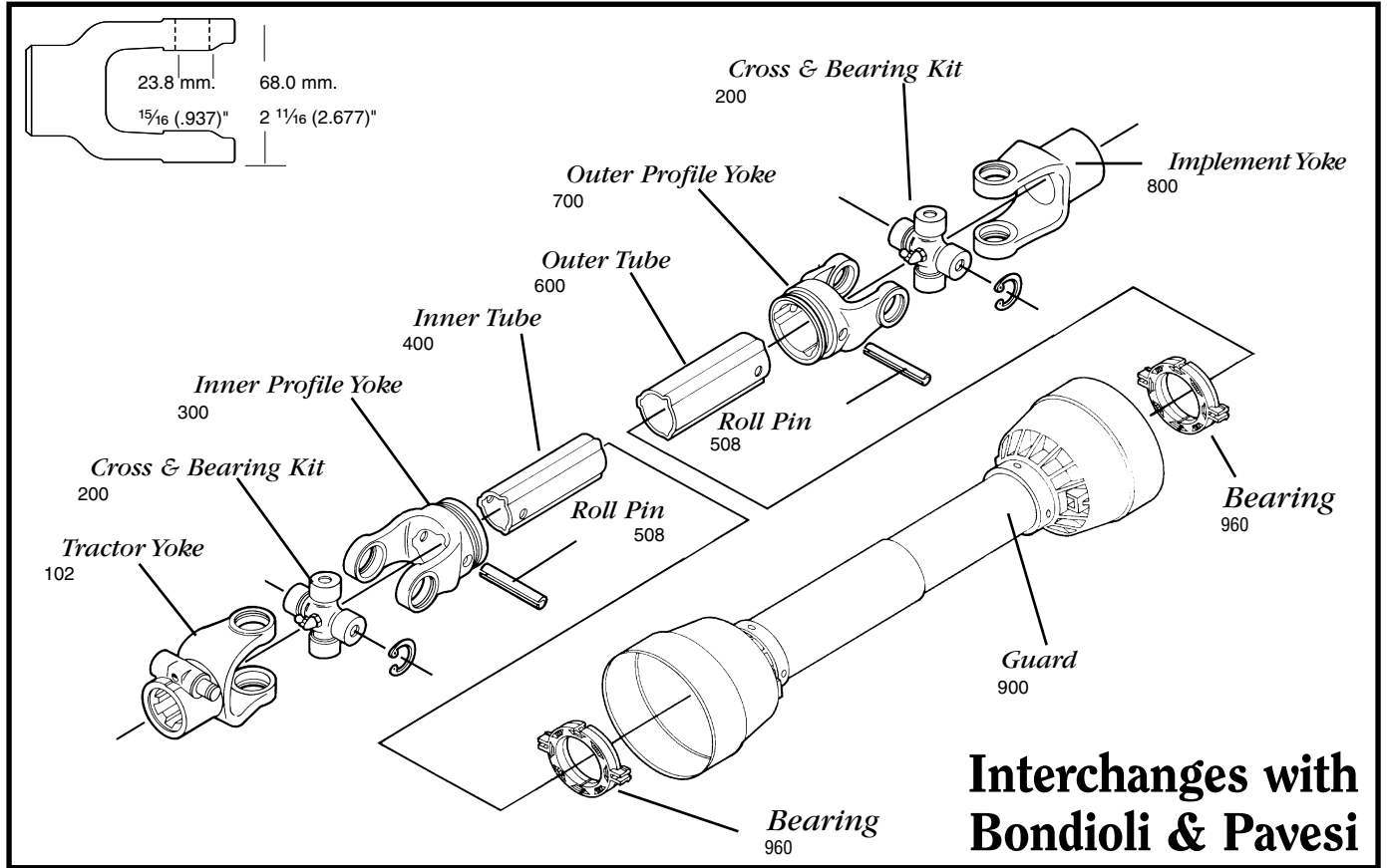


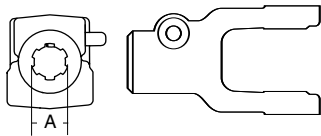
AGRICULTURAL PARTS

2 SERIES METRIC



Interchanges with Bondioli & Pavesi

Cross & bearing kit and outboard yokes interchange with Walterscheid 2200 series



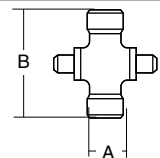
SPECIFICATIONS

RB&H #	LENGTH (IN.)
102-8206	1 3/8 x 6
102-8221	1 3/8 x 21

Repair Pin 1300 6121

SPECIFICATIONS

RB&H #	LENGTH (IN.)
572020351	1 3/8 x 6
572020751	1 3/8 x 21



SPECIFICATIONS

RB&H #	BONDIOLI #	DIM "A" (MM.)	DIM "A" (IN.)	DIM "B" (MM.)	DIM "B" (IN.)
200-8261	41202	23.8	1 5/16 (.937)	61.3	2 13/32 (2.413)
201-8261	Extended Life	23.8	1 5/16 (.937)	61.3	2 13/32 (2.413)

Snap ring located in yoke

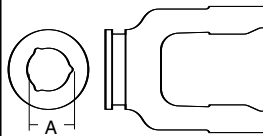
To order by phone: **1-800-669-9650**

Tractor Yoke

Quick Disconnect

Ball Collar Style

Cross & Bearing Kit

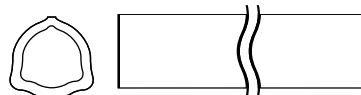


Inner Profile Yoke

SPECIFICATIONS

RB&H #	BONDIOLI #	DIM. "A" BORE (MM.)	DIM. "B" BORE (IN.)
300-6229	204026852	29.8	1 11/64 (1.17)

With bearing groove



Inner Tube

SPECIFICATIONS

RB&H #	LENGTH (M.)	LENGTH (IN.)
400-6229	1.5	59 1/16
404-6229	1.0	39 3/8

29.0 (3.4 Wall) mm.

1 3/32 (1/8 Wall)"

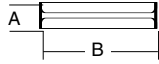
1.142 (.134 Wall)"

To order by fax: **1-800-736-0141**

AGRICULTURAL PARTS

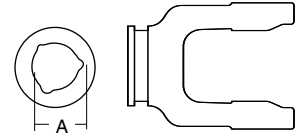
2 SERIES METRIC

Roll Pin



SPECIFICATIONS				
RB&H #	DIM "A" (MM.)	DIM "A" (IN.)	DIM "B" (MM.)	DIM "B" (IN.)
508-0860	8.0	5/16 (.315)	60.0	2 29/64 (2.36)

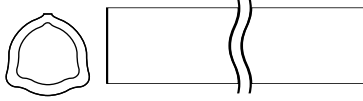
Outer Profile Yoke



SPECIFICATIONS			
RB&H #	BONDIOLI #	DIM "A" (MM.)	DIM "A" (IN.)
700-6236	204026851	36.8	1 29/64 (1.45)

With bearing groove

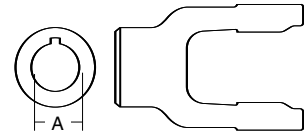
Outer Tube*



SPECIFICATIONS			
RB&H #	BONDIOLI #	LENGTH (M.)	LENGTH (IN.)
600-6236	125031500	1,500	59 1/16
604-6236	-	1,000	39 3/8

33.0 (2.6 Wall) mm.
 1 3/16 (3/32 Wall)"
 1.299 (.102 Wall)"

Implement Yoke

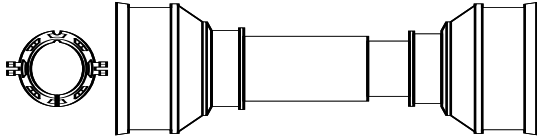


Round Bore

SPECIFICATIONS				
RB&H #	DIM "A" (MM.)	DIM "A" (IN.)	STANDARD KEYWAY (MM.)	STANDARD KEYWAY (IN.)
800-8225	25.0	63/64 (.984)	8.0	5/16 (.315)
800-8208	25.0	1 (1.00)	8.0	1/4 (.250)
800-8230	30.0	1 3/16 (1.181)	8.0	5/16 (.315)
800-8210	31.8	1 1/4 (1.25)	6.4	1/4 (.250)
800-8211	34.91	1 3/8 (1.375)	8.0	5/16 (.313)

With keyway & set screw

Plastic Guard



SPECIFICATIONS	
RB&H #	OVERALL DRIVELINE LENGTH (IN.)
900-2548	48
900-2560	60

Without bearings
 Order bearings as required 961-2502 (2 per kit)