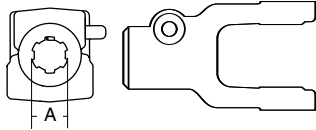
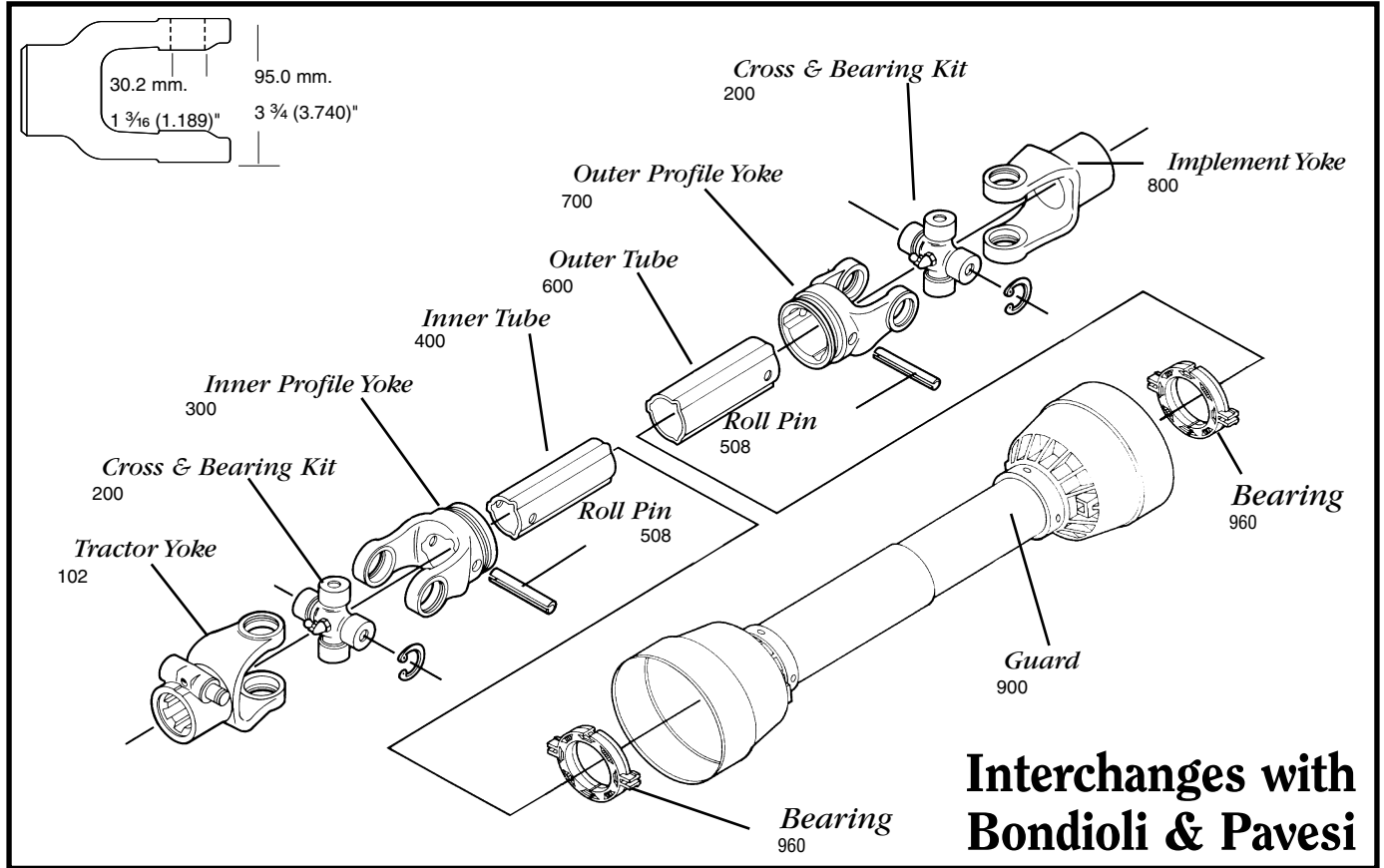


**AGRICULTURAL PARTS**

**5 SERIES METRIC**



**Tractor Yoke**

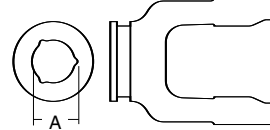
**Quick Disconnect**

SPECIFICATIONS	
RB&H #	DIM. "A" BORE (IN.)
102-6506	1 3/8 x 6
102-6521	1 3/8 x 6

Repair pin 13006121

**Ball Collar Style**

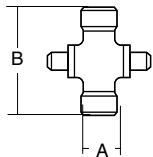
SPECIFICATIONS	
RB&H #	DIM. "A" BORE (IN.)
572050351	1 3/8 x 6
572050751	1 3/8 x 21
572053851	1 3/4 x 20



**Inner Profile Yoke**

SPECIFICATIONS			
RB&H #	BONDIOLI #	DIM "A" BORE (MM.)	DIM "A" BORE (IN.)
300-6545	204056861	45.0	1 25/32

With bearing groove



**Cross & Bearing Kit**

SPECIFICATIONS					
RB&H #	BONDIOLI #	DIM "A" (MM.)	DIM "A" (IN.)	DIM "B" (MM.)	DIM "B" (IN.)
200-6580	41205	30.2	1 3/16 (1.189)	79.4	3 1/8
201-6580	Extended Life	30.2	1 3/16 (1.189)	79.4	3 1/8

Snap ring located in yoke



**Inner Tube**

SPECIFICATIONS		
RB&H #	LENGTH (M.)	LENGTH (IN.)
400-6545	1.5	59 1/16
404-6545	1.0	39 3/8

45.0 (4.0 Wall) mm.  
1 25/32 (5/32 Wall)"  
1.772 (.158 Wall)"

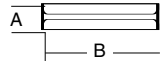
To order by phone: **1-800-669-9650**

To order by fax: **1-800-736-0141**

**AGRICULTURAL PARTS**

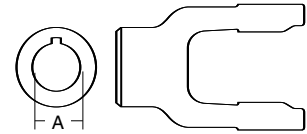
**5 SERIES METRIC**

**Roll Pin**



SPECIFICATIONS				
RB&H #	DIM "A" (MM.)	DIM "A" (IN.)	DIM "B" (MM.)	DIM "B" (IN.)
508-1075	10.0	1 <sup>3</sup> / <sub>32</sub> (.394)	75.0	2 <sup>15</sup> / <sub>16</sub>

**Implement Yoke**



**Round Bore**

SPECIFICATIONS				
RB&H #	DIM "A" (MM.)	DIM "A" (IN.)	DIM "B" (MM.)	DIM "B" (IN.)
800-6510	31.75	1 1/4 (1.250)	6.35	1/4 (.250)
800-6511	34.93	1 3/8 (1.375)	7.95	5/16 (.313)

With keyway & set screw

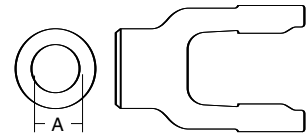
**Outer Tube**



SPECIFICATIONS		
RB&H #	LENGTH (M.)	LENGTH (IN.)
600-6552	1.5	59 1/16
604-6552	1.0	39 3/8

52.0 (3.0 Wall) mm.  
2<sup>1</sup>/<sub>2</sub> (1/8 Wall)"  
2.047 (.118 Wall)"

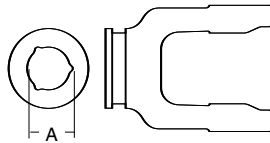
**Shear Pin**



SPECIFICATIONS		
RB&H #	DIM "A" BORE (MM.)	DIM "A" BORE (IN.)
802-6535	35.0	1 3/8 (1.378)

With pin hole

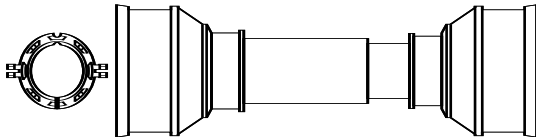
**Outer Profile Yoke**



SPECIFICATIONS			
RB&H #	BONDIOLI #	DIM "A" (MM.)	DIM "A" (IN.)
700-6552	204056860	52.0	2 1/32

With bearing groove

**Plastic Guard**



SPECIFICATIONS	
RB&H #	OVERALL DRIVELINE LENGTH (IN.)
902-3548	48
902-3560	60

Bearings 961-3505