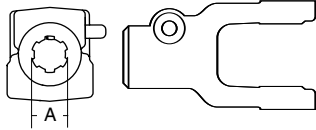
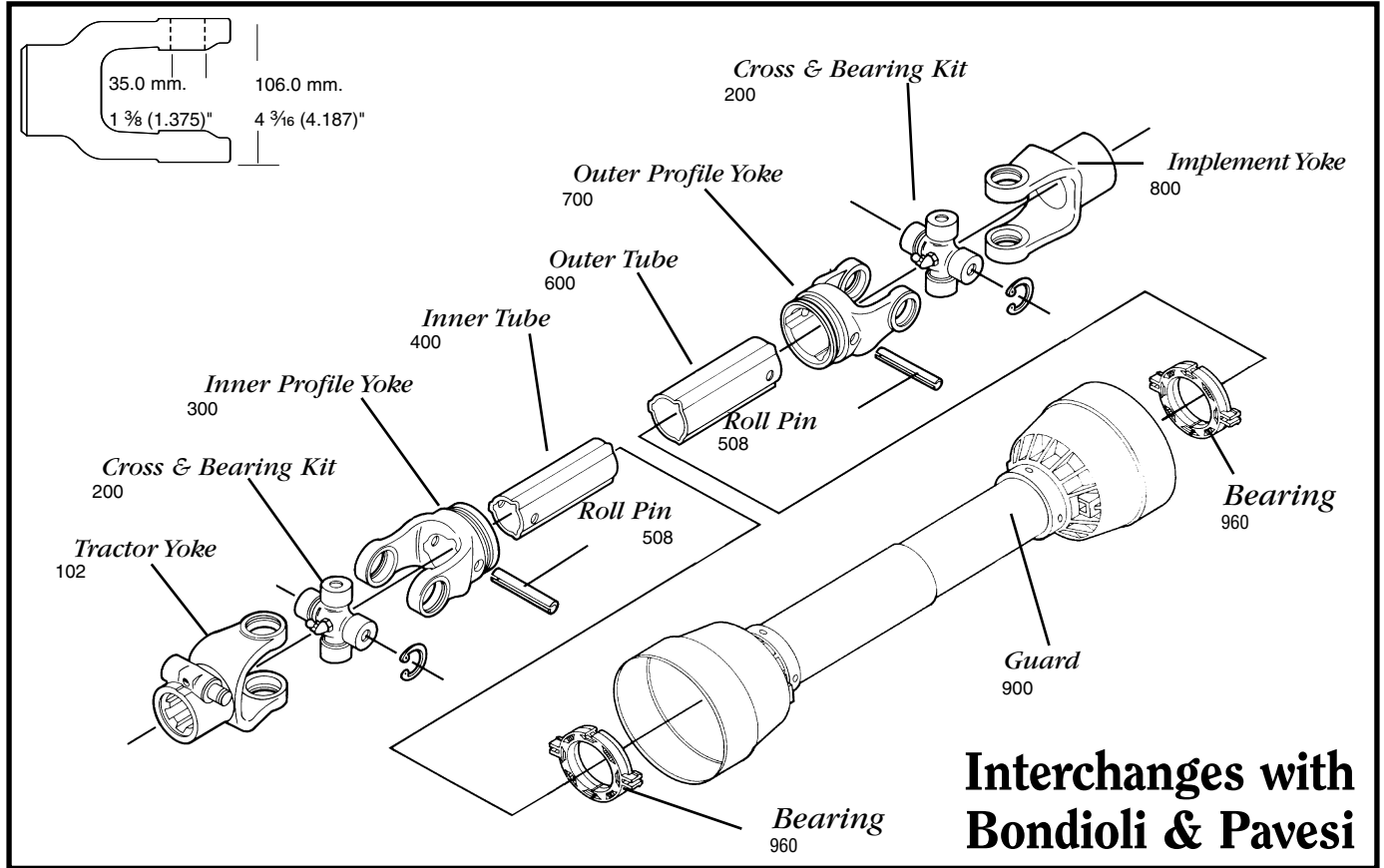
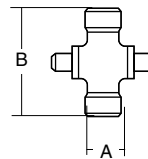


AGRICULTURAL PARTS

7 SERIES METRIC



Tractor Yoke



Cross & Bearing Kit

Quick Disconnect

SPECIFICATIONS	
RB&H #	DIM. "A" BORE (IN.)
102-6706	1 3/8 x 6
102-6720*	1 3/4 x 20
102-6721	1 3/4 x 21

Repair Pin 13006121
*Repair Pin 13006720

Ball Collar Style

SPECIFICATIONS	
RB&H #	DIM. "A" BORE (IN.)
572070351	1 3/8 x 6
572070751	1 3/8 x 21
572073851	1 3/4 x 20

SPECIFICATIONS

RB&H #	BONDIOLI #	DIM "A" (MM.)	DIM "A" (IN.)	DIM "B" (MM.)	DIM "B" (IN.)
200-6794	41207	35.0	1 3/8 (1.375)	94.0	3 49/64 (3.703)
201-6794	Extended Life	35.0	1 3/8 (1.375)	94.0	3 49/64 (3.703)
200-8706*	-	30.2	1 1/16 (1.188)	106.5	4 3/16 (4.193)
201-8706*	-	30.2	1 1/16 (1.188)	106.5	4 3/16 (4.193)

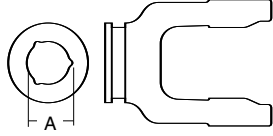
Snap ring located in yoke

* Old Bondioli & Pavesi 7 series is interchangeable with Walterscheid 230 series

AGRICULTURAL PARTS

7 SERIES METRIC

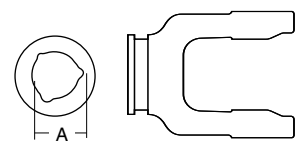
Inner Profile Yoke



SPECIFICATIONS			
RB&H #	BONDIOLI #	DIM "A" (MM.)	DIM "A" (IN.)
300-6745	2041768	45	1 25/32

With bearing groove

Outer Profile Yoke



SPECIFICATIONS			
RB&H #	BONDIOLI #	DIM "A" (MM.)	DIM "A" (IN.)
700-6754	204176851	54.0	2 1/8

With bearing groove

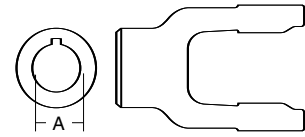
Inner Tube



SPECIFICATIONS		
RB&H #	LENGTH (M.)	LENGTH (IN.)
400-6745	1.5	59 1/8
404-6745	1.0	39 3/8

45.0 (4.0 Wall) mm.
 1 9/64 (7/32 Wall)"
 1.766 (.218 Wall)"

Implement Yoke

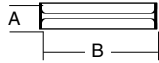


Round Bore

SPECIFICATIONS				
RB&H #	DIM "A" BORE (MM.)	DIM "A" BORE (IN.)	STANDARD KEYWAY (MM.)	STANDARD KEYWAY (IN.)
800-6722	35.0	1 3/8 (1.375)	8.0	5/16

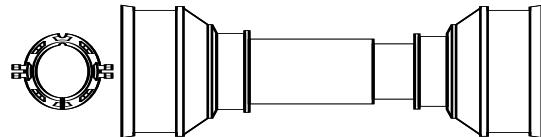
With keyway & set screw

Roll Pin



SPECIFICATIONS				
RB&H #	DIM "A" (MM.)	DIM "A" (IN.)	DIM "B" (MM.)	DIM "B" (IN.)
508-1080	10.0	13/32 (.394)	80.0	3 1/2

Plastic Guard



Outer Tube*



SPECIFICATIONS		
RB&H #	LENGTH (M.)	LENGTH (IN.)
600-6654	1.5	59 1/8
604-6654	1.0	39 3/8

* Can be used as 400-6854 (inner tube)

54.0 (5.5 Wall) mm.
 2 1/8 (5/32 Wall)"
 2.126 (.158 Wall)"

SPECIFICATIONS	
RB&H #	OVERALL DRIVELINE LENGTH (IN.)
902-3548	48
902-3566	60

Bearings 961-3567 (2 per kit)