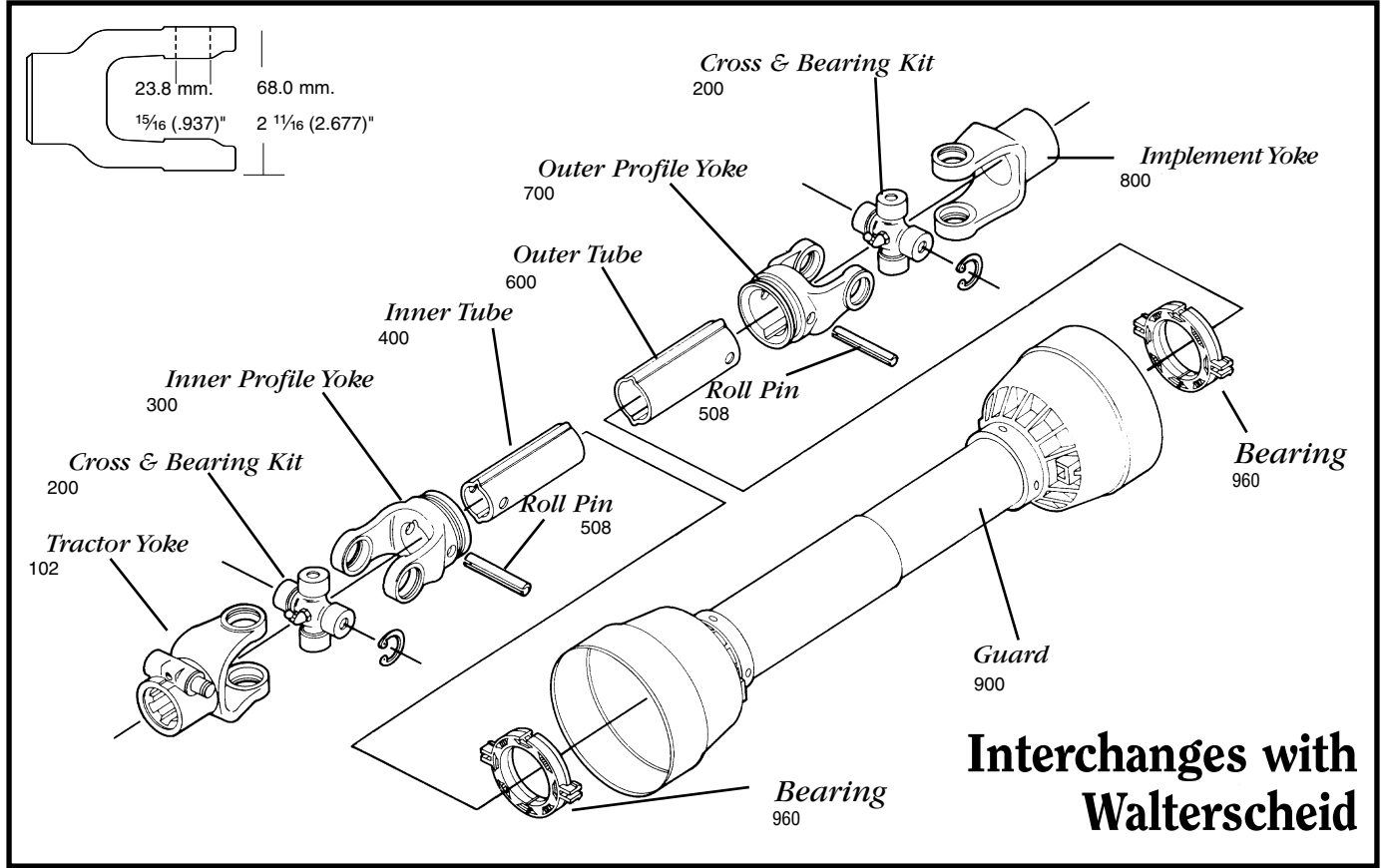


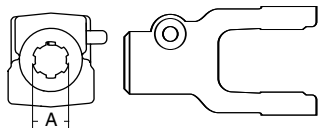
AGRICULTURAL PARTS

2200/200 SERIES * METRIC



**Interchanges with
Walterscheid**

Cross & bearing kit and outboard yokes interchange with Bondioli 2 series



Tractor Yoke

Inner Profile Yoke

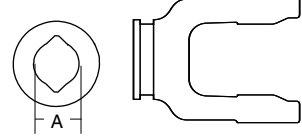
**Quick
Disconnect**

Collar Type

SPECIFICATIONS	
RB&H #	DIM "A" BORE (IN.)
102-8206	1 3/8 x 6
102-8221	1 3/8 x 21

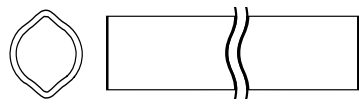
Repair Pin 13007138

SPECIFICATIONS	
WALTERSHEID #	DIM "A" BORE (IN.)
380905	1 3/8 x 6
363810	1 3/8 x 21
331065	1 3/4 x 20

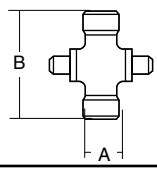


SPECIFICATIONS			
RB&H #	WALTERSHEID #	DIM "A" BORE (MM.)	DIM "A" BORE (IN.)
300-7234	041065	34.5	1 11/32

With bearing groove



Inner Tube



**Cross &
Bearing Kit**

SPECIFICATIONS					
RB&H #	WALTERSHEID #	DIM "A" (MM.)	DIM "A" (IN.)	DIM "B" (MM.)	DIM "B" (IN.)
200-8261	044439	23.8	15/16 (.937)	61.2	2 13/32 (2.413)
201-8261	Extended Life	23.8	15/16 (.937)	61.2	2 13/32 (2.413)

Snap ring located in yoke

SPECIFICATIONS		
RB&H #	LENGTH (M.)	LENGTH (IN.)
400-7234	1.5	59 1/16
404-7234	1.0	39 3/8

34.5 (4.0 Wall) mm.
1 11/32 (3/32 Wall)"
1.358 (.158 Wall)"

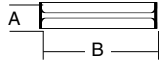
To order by phone: **1-800-669-9650**

To order by fax: **1-800-736-0141**

AGRICULTURAL PARTS

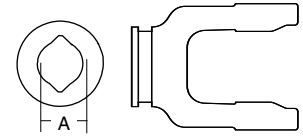
2200/200 SERIES * METRIC

Roll Pin



SPECIFICATIONS				
RB&H #	DIM "A" (MM.)	DIM "A" (IN.)	DIM "B" (MM.)	DIM "B" (IN.)
508-1060	10.0	13/32 (.394)	60.0	2 3/8

Outer Profile Yoke



SPECIFICATIONS			
RB&H #	WALTERSHEID #	DIM "A" BORE (MM.)	DIM "A" BORE (IN.)
700-7241	041068	41.0	1 5/8 (1.1614)

With bearing groove

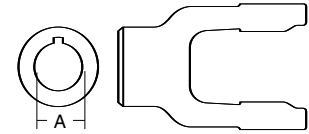
Outer Tube



SPECIFICATIONS		
RB&H #	LENGTH (M.)	LENGTH (IN.)
600-7241	1.5	59 1/16
604-7241	1.0	39 3/8

41.0 (3.0 Wall) mm.
1 5/8 (1/8 Wall)"
1.614 (.118 Wall)"

Implement Yoke

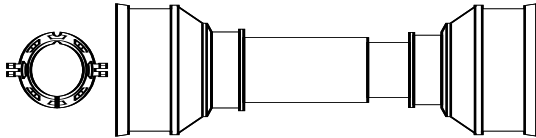


Round Bore

SPECIFICATIONS				
RB&H #	DIM "A" BORE (MM.)	DIM "A" BORE (IN.)	STANDARD KEYWAY (MM.)	STANDARD KEYWAY (IN.)
800-8225	25.0	63/64 (.984)	8.0	5/16 (.313)
800-8208	25.4	1 (1.0)	6.35	1/4 (.250)
800-8230	30.0	1 3/16 (1.181)	8.0	5/16 (.313)
800-8210	31.75	1 1/4 (1.250)	6.35	1/4 (.250)
800-8211	34.93	1 3/8 (1.375)	7.95	5/16 (.313)

With keyway & set screw

Plastic Guard



SPECIFICATIONS	
RB&H #	OVERALL DRIVELINE LENGTH (IN.)
900-2548	48
900-2560	60

Bearings 961-0251 (2 per kit)