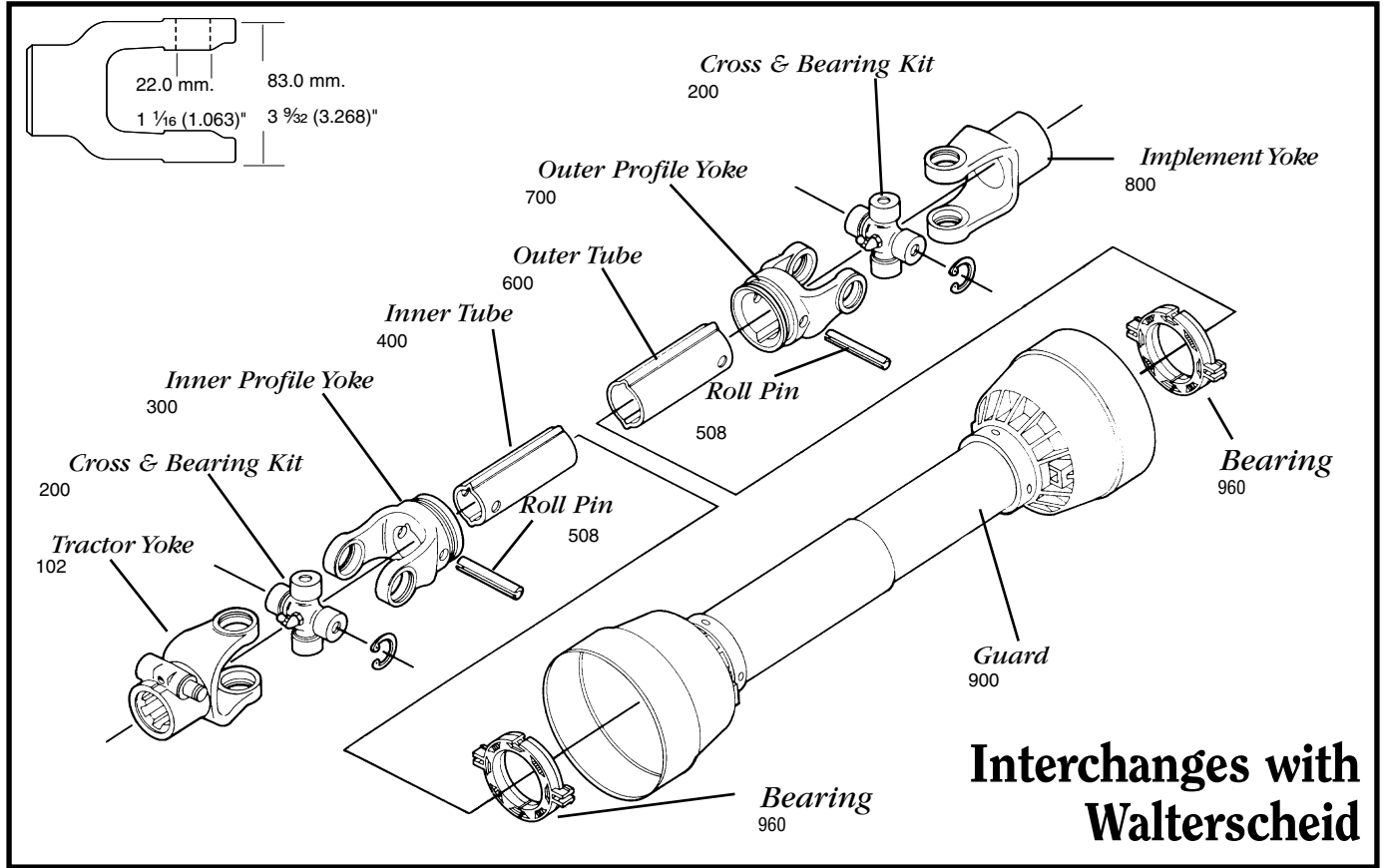
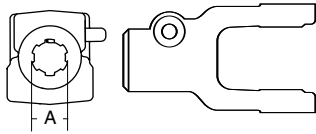


**AGRICULTURAL PARTS**

**2300/210 SERIES \* METRIC**



Cross & bearing kit and outboard yokes interchange with Bondioli 4 series

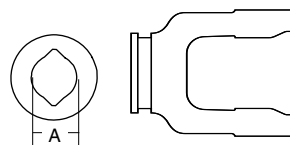


**Tractor Yoke**

**Quick Disconnect**

SPECIFICATIONS	
RB&H #	DIM "A" BORE (IN.)
102-8406	1 3/8 x 6
102-8421	1 3/8 x 21

Repair pin 13007138



**Inner Profile Yoke**

**Collar Style**

SPECIFICATIONS	
WALTERSHEID #	DIM "A" BORE (IN.)
363511	1 3/8 x 6
380906	1 3/8 x 21
363515	1 3/4 x 20

**SPECIFICATIONS**

RB&H #	WALTERSHEID #	DIM "A" BORE (MM.)	DIM "A" BORE (IN.)
300-7434	041315	34.5	1 1/2 (1.358)

With bearing groove

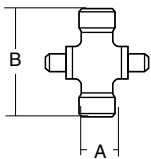


**Inner Tube**

**SPECIFICATIONS**

RB&H #	LENGTH (M.)	LENGTH (IN.)
400-7234	1.5	59 1/16
404-7234	1.0	39 3/8

4.5 (4.0 Wall) mm.  
1 1/32 (3/32 Wall) inch  
1.358 (.158 Wall) inch



**Cross & Bearing Kit**

SPECIFICATIONS					
RB&H #	WALTERSHEID #	DIM "A" (MM.)	DIM "A" (IN.)	DIM "B" (MM.)	DIM "B" (IN.)
200-8474	044444	27.0	1 1/16 (1.063)	74.6	2 15/16
201-8474	Extended Life	27.0	1 1/16 (1.063)	74.6	2 15/16

Snap ring located in yoke

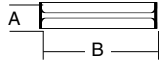
To order by phone: **1-800-669-9650**

To order by fax: **1-800-736-0141**

**AGRICULTURAL PARTS**

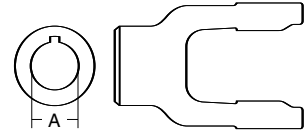
**2300/210 SERIES \* METRIC**

**Roll Pin**



SPECIFICATIONS				
RB&H #	DIM "A" (MM.)	DIM "A" (IN.)	DIM "B" (MM.)	DIM "B" (IN.)
508-1065	10.0	13/32 (.394)	65.0	2 9/16

**Implement Yoke**

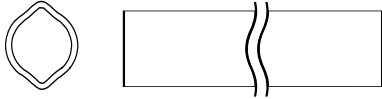


**Round Bore**

SPECIFICATIONS				
RB&H #	DIM "A" BORE (MM.)	DIM "A" BORE (IN.)	STANDARD KEYWAY (MM.)	STANDARD KEYWAY (IN.)
800-8430	30.0	1 3/16	8.0	5/16
800-8410	31.8	1 1/4	8.0	1/4
800-8411	34.9	1 1/8	6.35	5/16

With keyway & set screw

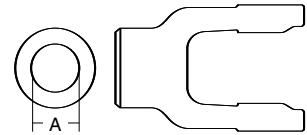
**Outer Tube**



SPECIFICATIONS		
RB&H #	LENGTH (M.)	LENGTH (IN.)
600-7241	1.5	59 1/16
604-7241	1.0	39 3/8

41.0 (3.0 Wall) mm.  
1 5/8 (1/2 Wall)"  
1.614 (.118 Wall)"

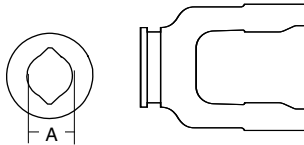
**Shear Pin**



SPECIFICATIONS		
RB&H #	DIM "A" BORE (MM.)	DIM "A" BORE (IN.)
802-8435	35.0	1 3/8 (1.378)

With pin hole

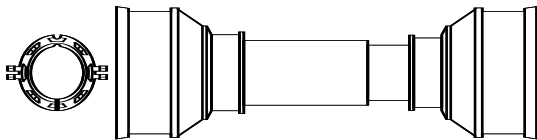
**Outer Profile Yoke**



SPECIFICATIONS			
RB&H #	DIM "A" (MM.)	DIM "A" (IN.)	DIM "B" (IN.)
700-7441	041318	41.0	1 5/8 (1.164)

With bearing groove

**Plastic Guard**



SPECIFICATIONS	
RB&H #	OVERALL DRIVELINE LENGTH (IN.)
900-2548	48
900-2560	60

Bearings 961-0251 (2 per kit)