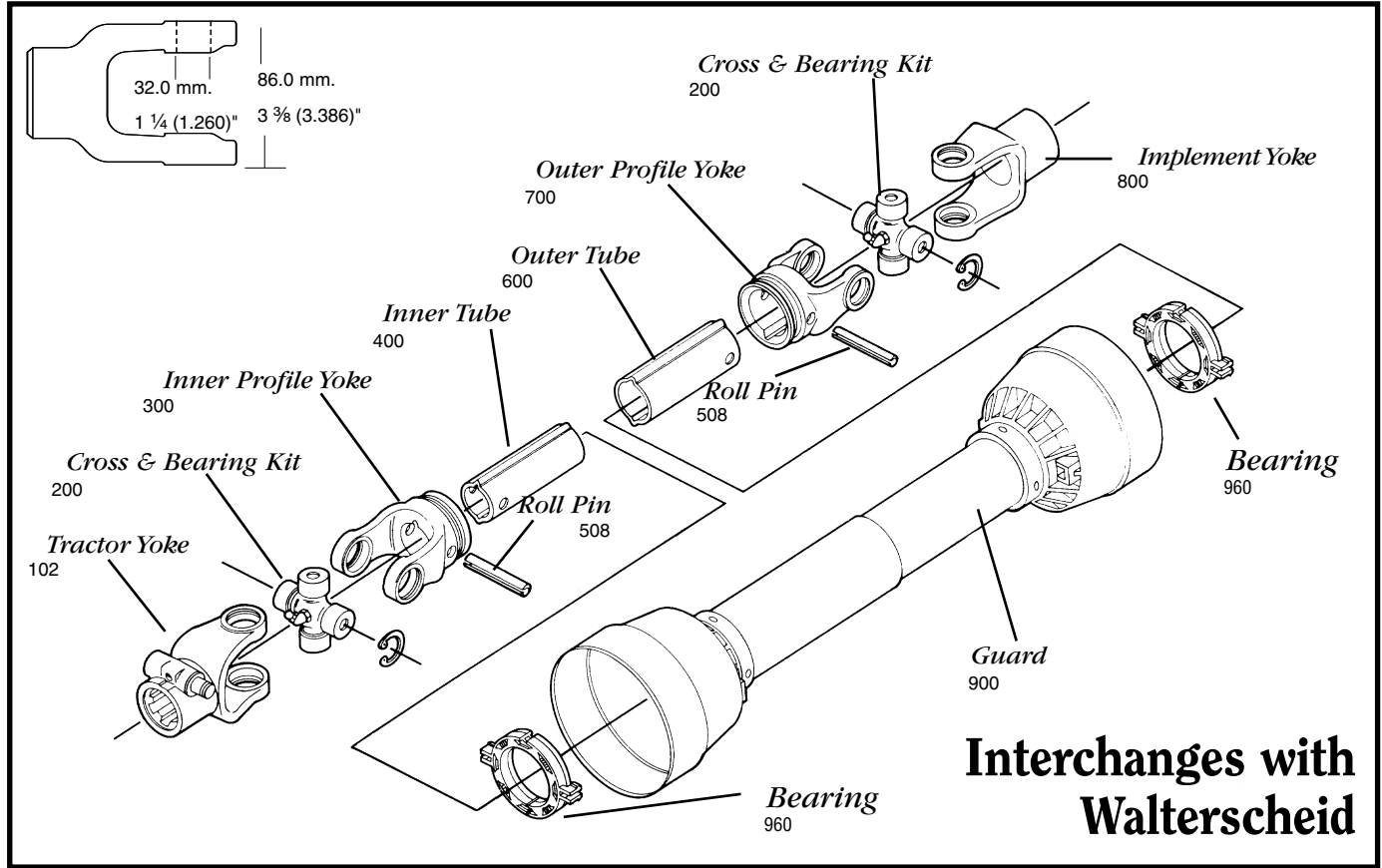
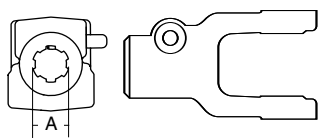


AGRICULTURAL PARTS

2400 SERIES * METRIC



**Interchanges with
Walterscheid**

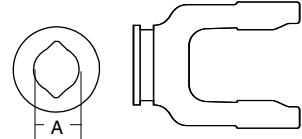


Tractor Yoke

**Quick
Disconnect**

SPECIFICATIONS	
RB&H #	DIM "A" BORE (IN.)
102-7606	1 3/8 x 6
102-7621	1 3/8 x 21

Repair pin 13007138



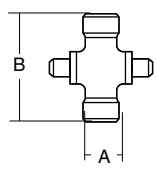
**Inner Profile
Yoke**

Collar Type

SPECIFICATIONS	
WALTERSHEID #	DIM "A" BORE (IN.)
380907	1 3/8 x 6
380908	1 3/8 x 21
362448	1 3/4 x 20

SPECIFICATIONS			
RB&H #	WALTERSHEID #	DIM "A" BORE (MM.)	DIM "A" BORE (IN.)
300-7639	019518	39.5	1 9/16

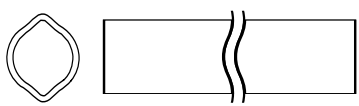
With bearing groove



**Cross &
Bearing Kit**

SPECIFICATIONS					
RB&H #	WALTERSHEID #	DIM "A" (MM.)	DIM "A" (IN.)	DIM "B" (MM.)	DIM "B" (IN.)
200-7676	312410	32.0	1 1/4 (1.260)	76.0	2 31/32
201-7676	Extended Life	32.0	1 1/4 (1.260)	76.0	2 31/32

Snap ring located in yoke



Inner Tube

SPECIFICATIONS		
RB&H #	LENGTH (ML)	LENGTH (IN.)
400-7539	1.5	59 1/16
404-7539	1.0	39 3/8

39.5 (4.5 Wall) mm.
1 9/16 (3/16 Wall)"
1.555 (.177 Wall)"

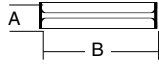
To order by phone: **1-800-669-9650**

To order by fax: **1-800-736-0141**

AGRICULTURAL PARTS

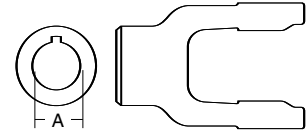
2400 SERIES * METRIC

Roll Pin



SPECIFICATIONS				
RB&H #	DIM "A" (MM.)	DIM "A" (IN.)	DIM "B" (MM.)	DIM "B" (IN.)
508-1075	10.0	13/32 (.394)	75.0	2 15/16 (2.953)

Implement Yoke



Round Bore

SPECIFICATIONS					
RB&H #	WALTERSCHEID #	DIM "A" BORE (MM.)	DIM "A" BORE (IN.)	STANDARD KEYWAY (MM.)	STANDARD KEYWAY (IN.)
800-7610	329040	31.75	1 1/4 (1.250)	6.35	1/4 (.250)
800-7611	329041	34.93	1 3/8 (1.375)	7.95	9/16 (.313)

With keyway & set screw

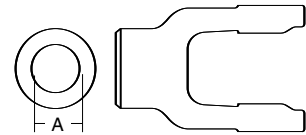
Outer Tube



SPECIFICATIONS		
RB&H #	LENGTH (M.)	LENGTH (IN.)
600-7548	1.5	59 1/16 (59.0)
604-7548	1.0	39 3/8

48.0 (4.0 Wall) mm.
1 7/8 (5/8 Wall)"
1.890 (1.158 Wall)"

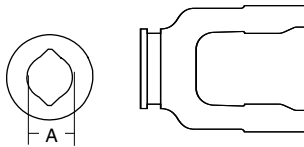
Shear Pin



SPECIFICATIONS		
RB&H #	DIM "A" BORE (MM.)	DIM "A" BORE (IN.)
802-7611	35.0	1 3/8

With pin hole

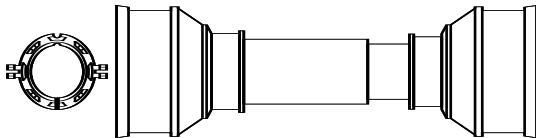
Outer Profile Yoke



SPECIFICATIONS		
RB&H #	DIM "A" (IN.)	DIM "B" (IN.)
700-7648	48.0	1 7/8 (1.890)

With bearing groove

Plastic Guard



SPECIFICATIONS	
RB&H #	OVERALL DRIVELINE LENGTH (IN.)
902-3548	48
902-3560	60

Bearings 961-3525 (2 per kit)