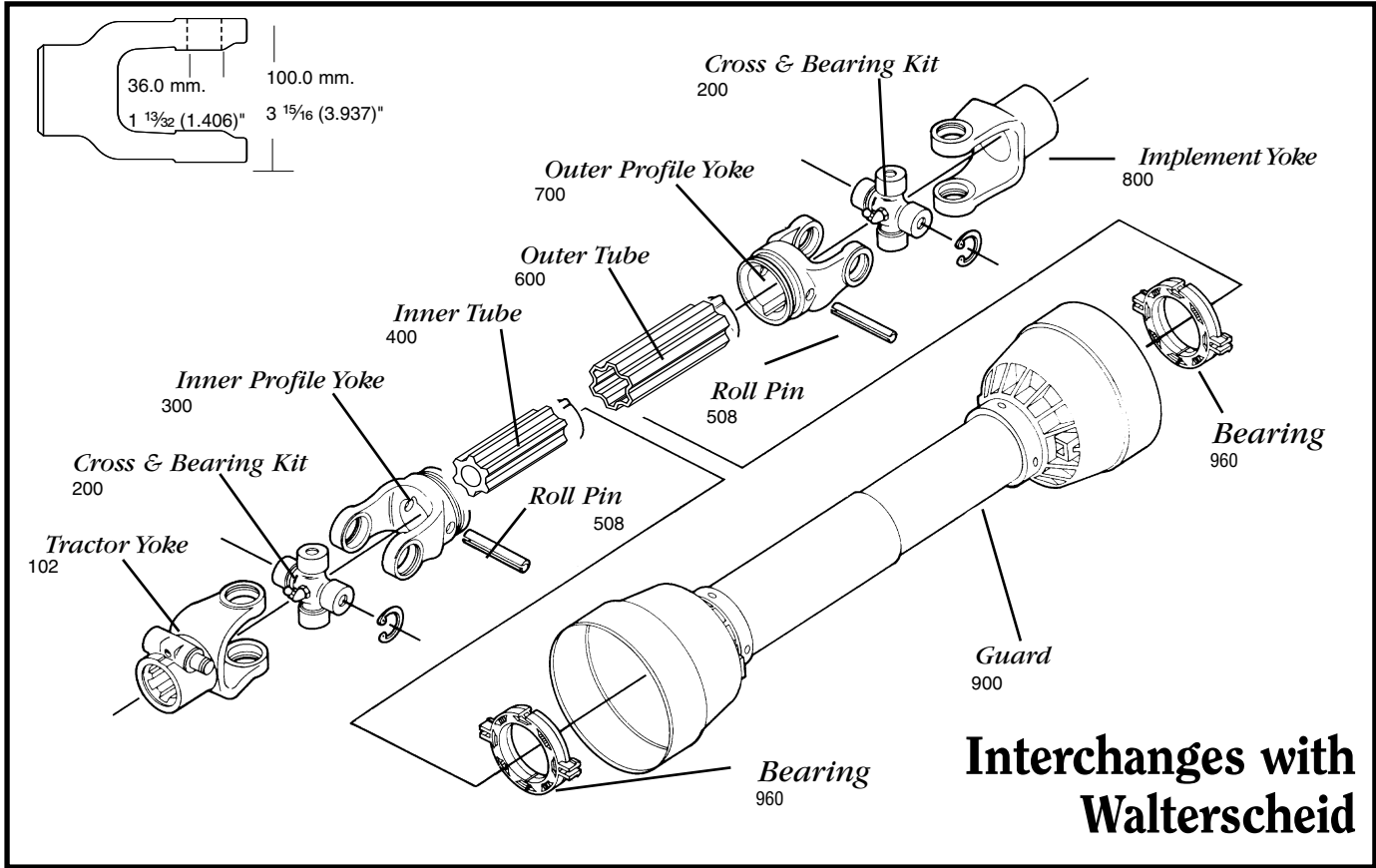
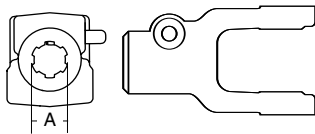


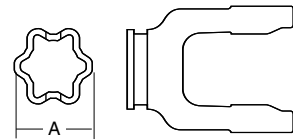
**AGRICULTURAL PARTS**  
**2500 SERIES METRIC**



**Tractor Yoke**



**Inner Profile Yoke**



**Quick Disconnect**

**Collar Style**

SPECIFICATIONS			
RB&H #	WALTERSHEID #	DIM "A" BORE (MM.)	DIM "A" BORE (IN.)
300-7951	097133	51.4	2 1/32 (2.023)

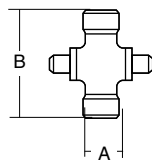
With bearing groove

SPECIFICATIONS	
RB&H #	DIM "A" BORE (IN.)
102-7906	1 3/8 x 6
102-7921	1 3/8 x 21
102-7920	1 3/8 x 20

SPECIFICATIONS	
WALTERSHEID #	DIM "A" BORE (IN.)
362428	1 3/8 x 6
362430	1 3/8 x 21
362434	1 3/4 x 20

Repair pin 13007138

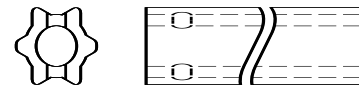
**Cross & Bearing Kit**



SPECIFICATIONS					
RB&H #	WALTERSHEID #	DIM "A" (MM.)	DIM "A" (IN.)	DIM "B" (MM.)	DIM "B" (IN.)
200-7989	312209	36.0	1 13/32 (1.417)	89.0	3 1/2
201-7989	Extended Life	36.0	1 13/32 (1.417)	89.0	3 1/2

Snap ring located in yoke

**Inner Tube**



SPECIFICATIONS		
RB&H #	LENGTH (M.)	LENGTH (IN.)
400-7951	1.5	59 1/16
404-7951	1.0	39 3/8

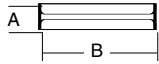
51.4 mm.  
2 1/32"  
2.023"

To order by phone: **1-800-669-9650**

To order by fax: **1-800-736-0141**

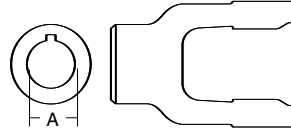
**AGRICULTURAL PARTS**

**2500 SERIES METRIC**



**Roll Pin**

<b>SPECIFICATIONS</b>				
RB&H #	DIM "A" (MM.)	DIM "A" (IN.)	DIM "B" (MM.)	DIM "B" (IN.)
508-1090	10.0	13/32 (.406)	90.0	3 1/2 (3.543)

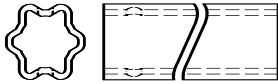


**Implement Yoke**

**Round Bore**

<b>SPECIFICATIONS</b>				
RB&H #	DIM "A" BORE (MM.)	DIM "A" BORE (IN.)	STANDARD KEYWAY (MM.)	STANDARD KEYWAY (IN.)
800-7922	35.0	1 3/8 (1.375)	8.0	5/16 (.313)
800-7924	38.1	1 1/2 (1.500)	9.5	3/8 (.375)

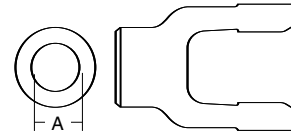
With keyway & set screw



**Outer Tube**

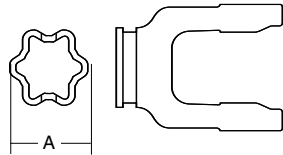
<b>SPECIFICATIONS</b>		
RB&H #	LENGTH (M.)	LENGTH (IN.)
600-7961	1.5	59 1/16
604-7961	1.0	39 3/8

61.0 (4.5 Wall) mm.  
2 3/8 (1 1/4 Wall)  
2.402 (.165 Wall)"



**Shear Pin**

<b>SPECIFICATIONS</b>		
RB&H #	DIM "A" BORE (MM.)	DIM "A" BORE (IN.)
802-7922	35.0	1 3/8 (1.375)
802-7924	38.1	1 1/2 (1.500)

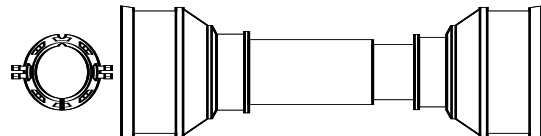


**Outer Profile Yoke**

<b>SPECIFICATIONS</b>			
RB&H #	WALTERSHEID #	DIM "A" (IN.)	DIM "B" (IN.)
700-7961	097140	61.0	2 3/8 (2.402)

With bearing groove

**Plastic Guard**



<b>SPECIFICATIONS</b>	
RB&H #	OVERALL DRIVELINE LENGTH (IN.)
902-3548	48
902-3560	60

With bearings (961-3525) (2 per kit)