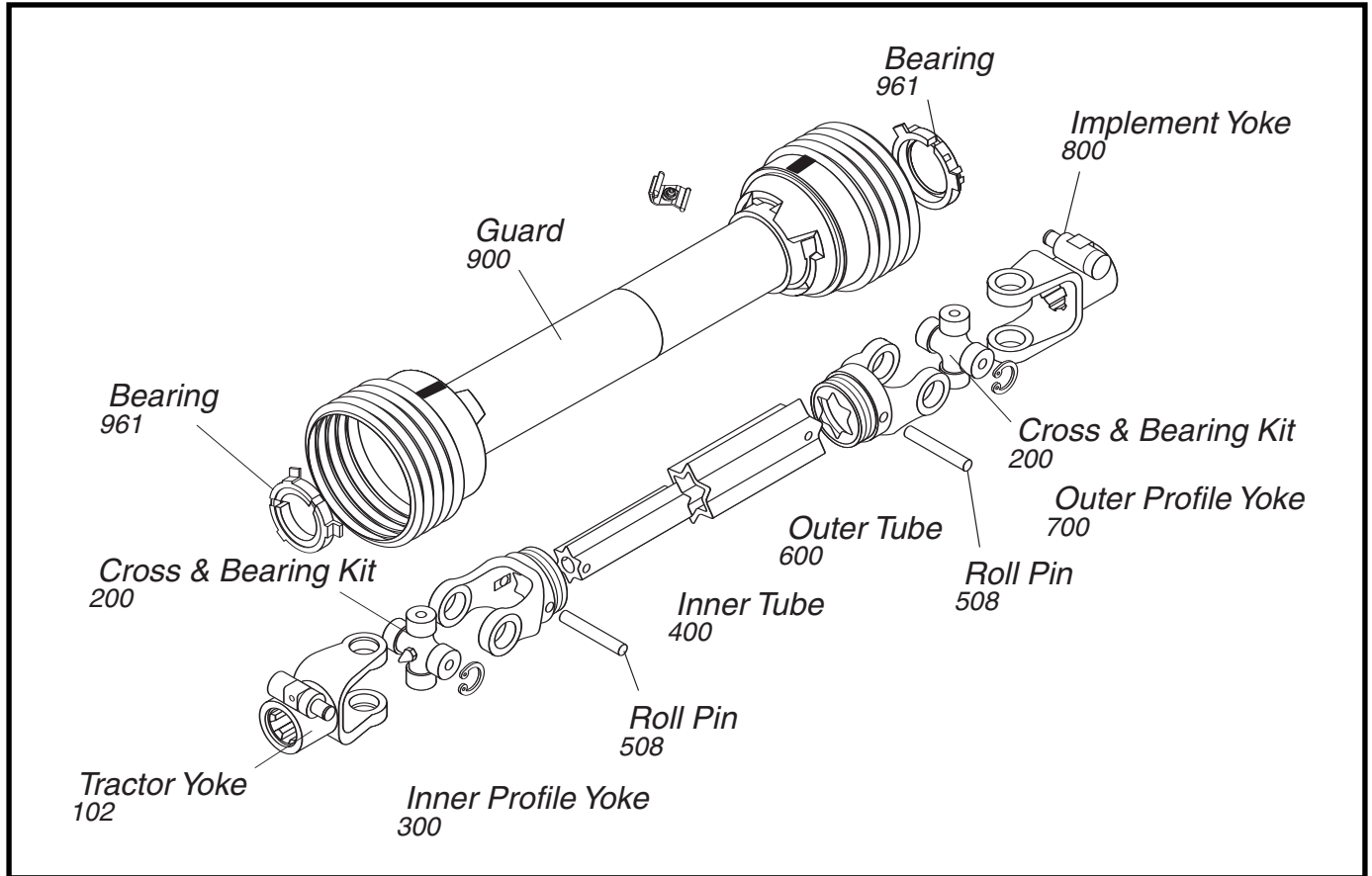


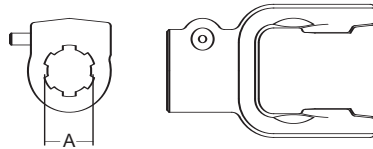
**AGRICULTURAL PARTS**

**2600 SERIES METRIC**

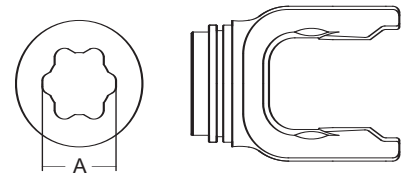
*\*Interchanges with Walterscheid*



**Tractor Yoke  
Quick  
Disconnect**



**Inner Profile  
Yoke**



**SPECIFICATIONS**

RB&H #	DIM "A" BORE (IN.)
102-7006	1 3/8 x 6
102-7020	1 3/4 x 20
102-7021	1 3/8 x 21

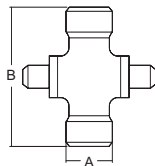
Repair Kit - 13007138

**SPECIFICATIONS**

RB&H #	DIM "A" BORE (MM.)	DIM "A" BORE (IN.)
300-7061	61.0	2 13/32 (2.40)

With Bearing Groove (Guard must rotate freely on yoke)

**Cross & Bearing  
Kit**



**SPECIFICATIONS**

RB&H #	DIM "A" BORE (MM.)	DIM "A" BORE (IN.)	DIM "B" BORE (MM.)	DIM "B" BORE (IN.)
200-7004	42.0	1 21/32 (1.65)	104.0	4 3/32
201-7004	42.0	1 21/32	104.0	3 3/32

Snap Ring Located in Yoke

To order by phone: **1-800-669-9650**

To order by fax: **1-800-736-0141**

**AGRICULTURAL PARTS**

**2600 SERIES METRIC**

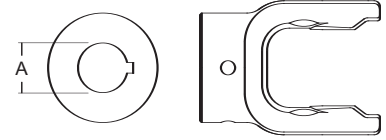
**Inner Tube**



SPECIFICATIONS		
RB&H #	LENGTH (MM.)	LENGTH (IN.)
400-7061	1,500	59 1/16 (59.0)
404-7061	1,000	39 3/8 (39.37)

61.0 (4.0 Wall) mm  
2.402 (.158 Wall)''

**Implement Yoke**



**Round Bore**

SPECIFICATIONS				
RB&H #	DIM "A" BORE (MM.)	DIM "A" BORE (IN.)	STANDARD KEYWAY (MM.)	STANDARD KEYWAY (IN.)
800-7024	38.10	1 1/2 (1.5)	9.53	3/8 (.375)
800-7026	41.28	1 5/8 (1.625)	9.53	3/8 (.375)
800-7028	44.45	1 3/4 (1.75)	9.53	3/8 (.375)
800-7032	50.80	2 (2.0)	12.7	1/2 (.5)

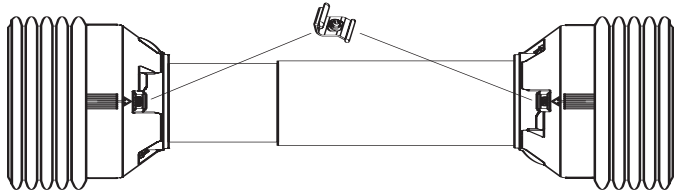
With Keyway & Set Screw

**Roll Pin**



SPECIFICATIONS				
RB&H #	DIM "A" BORE (MM.)	DIM "A" BORE (IN.)	DIM "B" BORE (MM.)	DIM "B" BORE (IN.)
508-1090	10.0	13/32 (.406)	90.0	3 1/2 (3.543)

**Plastic Guard**



SPECIFICATIONS	
RB&H #	OVERALL DRIVELINE LENGTH (IN.)
900-4546	60
900-4560	48

Bearings 961-4535 (2 per kit)

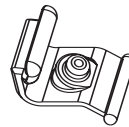
**Outer Tube**



SPECIFICATIONS		
RB&H #	DIM "B" BORE (MM.)	DIM "B" BORE (IN.)
600-7071	1.5	59 1/16 (59.0)
604-7071	1.0	39 3/8 (39.37)

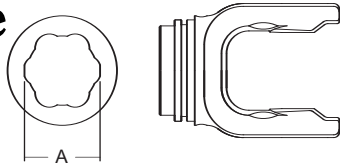
71.0 (5.0 Wall) mm  
2.795 (.197 Wall)''

**Easy Lock**



Part Number: 13005000

**Outer Profile Yoke**



SPECIFICATIONS		
RB&H #	DIM "B" BORE (MM.)	DIM "B" BORE (IN.)
700-7071	71.0	2 5/64 (2.795)

With Bearing Groove