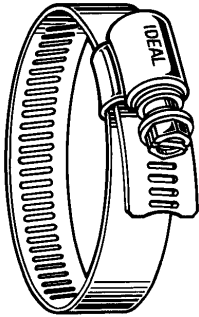


CLAMPS

STANDARD WORM GEAR

50 Series
(.56 WIDTH)

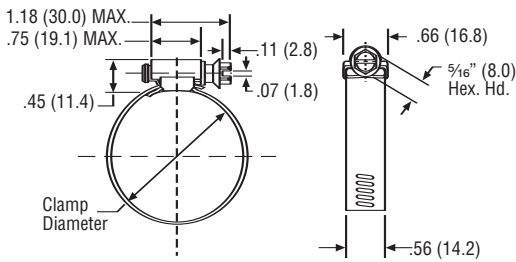


FEATURES:

- 5/16" hex head, open screw
- Stainless band and housing
- Zinc plated carbon steel screw

APPLICATION:

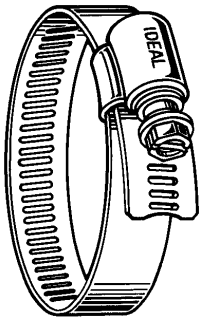
- Versatile Hy-Gear clamps are used from simple home and auto repair to heavy duty industrial uses



SPECIFICATIONS

RB&H #	MINIMUM (IN.)	MAXIMUM (IN.)
5006/I	3/8	7/8
5008/I	7/16	1
5010/I	1/2	1 1/8
5012/I	1/2	1 1/4
5016/I	3/4	1 1/2
5020/I	3/4	1 3/4
5024/I	1	2
5028/I	1 1/16	2 1/4
5032/I	1 9/16	2 1/2
5036/I	7/8	2 3/4
5040/I	1 1/2	3
5044/I	1 5/16	3 1/4
5048/I	1 3/8	3 1/2
5052/I	1 7/8	3 3/4
5056/I	2 1/8	4
5064/I	2 5/8	4 1/2
5072/I	3 1/8	5
5080/I	3 5/8	5 1/2
5088/I	4 1/4	6
5096/I	4 3/4	6 1/2
50104/I	4	7

57 Series
(.50 WIDTH)

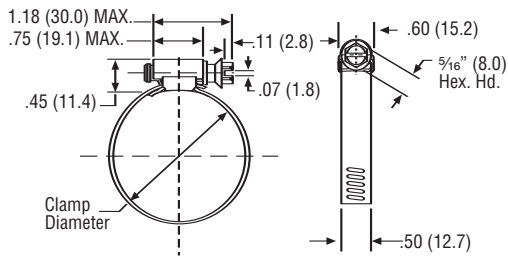


FEATURES:

- 5/16" hex head, open screw
- Stainless band and housing
- Zinc plated, yellow dichromate, carbon steel screw

APPLICATION:

- Most common home and automotive applications



SPECIFICATIONS

RB&H #	MINIMUM (IN.)	MAXIMUM (IN.)
5706/I	3/8	7/8
5708/I	7/16	1
5710/I	1/2	1 1/8
5712/I	1/2	1 1/4
5716/I	3/4	1 1/2
5720/I	3/4	1 3/4
5724/I	1	2
5728/I	1 1/16	2 1/4
5732/I	1 9/16	2 1/2
5736/I	7/8	2 3/4
5740/I	1 1/8	3
5744/I	1 5/16	3 1/4
5748/I	1 3/8	3 1/2
5752/I	1 7/8	3 3/4
5756/I	2 1/8	4
5764/I	2 5/8	4 1/2
5772/I	3 1/8	5
5780/I	3 5/8	5 1/2
5788/I	4 1/4	6
5796/I	4 3/4	6 1/2

Call for availability.

CLAMPS

STANDARD WORM GEAR

SPECIFICATIONS

RB&H #	MINIMUM (IN.)	MAXIMUM (IN.)
6806/1	3/8	7/8
6808/1	7/16	1
6810/1	1/2	1 1/8
6812/1	1/2	1 1/4
6816/1	3/4	1 1/2
6820/1	3/4	1 3/4
6824/1	1	2
6828/1	1 5/16	2 1/4
6832/1	1 9/16	2 1/2
6836/1	7/8	2 3/4
6840/1	1 1/8	3
6844/1	1 5/16	3 1/4
6848/1	1 9/16	3 1/2
6852/1	1 7/8	3 3/4
6856/1	2 1/8	4
6864/1	2 5/8	4 1/2
6872/1	3 1/8	5
6880/1	3 5/8	5 1/2
6888/1	4 1/4	6
6896/1	4 3/4	6 1/2
68104/1	4	7
68128/1	2 1/2	8 1/2
68152/1	2 1/2	10
68188/1	2 1/2	12 1/4
68236/1	2 1/2	15 1/4
68248/1	2 1/8	16

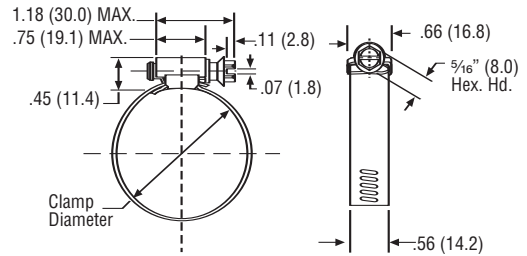
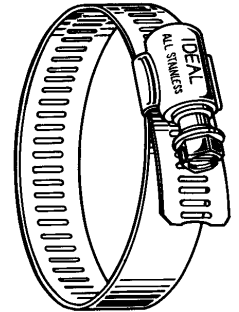
68 Series
(.56 WIDTH)

FEATURES:

- 5/16" hex head, open screw
- Stainless band and housing
- Stainless screw

APPLICATION:

- Versatile Hy-Gear clamps are used from simple home and auto repair to heavy duty industrial uses



SPECIFICATIONS

RB&H #	MINIMUM (IN.)	MAXIMUM (IN.)
6202/1	1/4	5/8
6203/1	5/16	7/8
6204/1	5/8	1 1/4
6205/1	5/8	1 1/2
6220/1	3/4	1 3/4

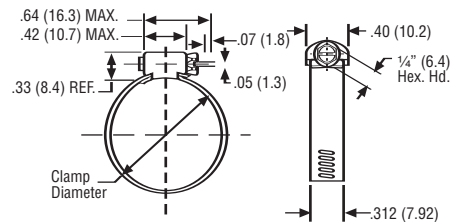
62 Series
(.312 WIDTH)

FEATURES:

- 1/4" hex head, open screw
- Stainless band and housing
- Zinc plated carbon steel screw

APPLICATION:

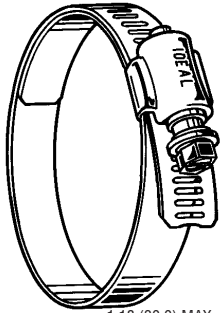
- Tiny, tough and precision engineered for use in such small hose applications as emission control, fuel lines, and vacuum hoses



CLAMPS

STANDARD WORM GEAR

53 Series
(.50 WIDTH)

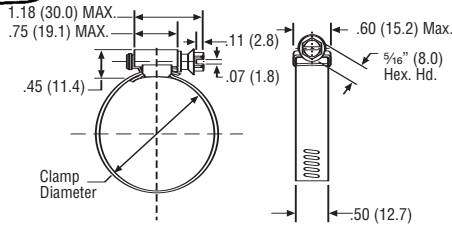


FEATURES:

- 5/16" hex head, open screw
- Lined worm drive for silicone rubber hose and other applications requiring a smooth clamping surface
- Stainless band and housing
- Carbon steel screw

APPLICATION:

- Specially designed for use with silicone rubber and other soft hose application



SPECIFICATIONS

RB&H #	MINIMUM (IN.)	MAXIMUM (IN.)
5306/I	1/2	7/8
5308/I	9/16	1
5310/I	3/4	1 1/8
5312/I	7/8	1 1/4
5316/I	1	1 1/2
5320/I	1 1/8	1 3/4
5324/I	1 1/4	2
5328/I	1 5/16	2 1/4
5332/I	1 9/16	2 1/8
5336/I	1 13/16	2 3/4
5340/I	2 1/16	3
5344/I	2 5/16	3 1/4
5348/I	2 9/16	3 1/2
5352/I	2 13/16	3 3/4
5356/I	3 1/16	4
5372/I	4 1/16	5

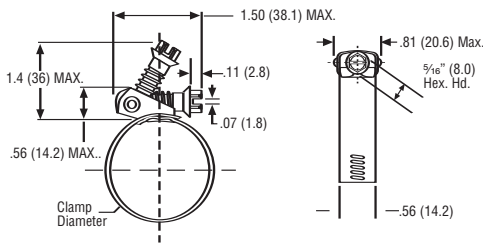
56 Series
(.56 WIDTH)

FEATURES:

- Snaplock, 5/16" hex head, zinc plated, yellow dichromate, carbon steel
- Stainless steel band and housing- 9/16" wide
- Zinc plated, yellow dichromate, carbon steel screw

APPLICATION:

- For installation in "closed" systems where the clamp must be disengaged to be applied



SPECIFICATIONS

RB&H #	MINIMUM (IN.)	MAXIMUM (IN.)
5612/I	1/2	1 1/4
5620/I	3/4	1 3/4
5628/I	1	2 1/4
5636/I	7/8	2 3/4
5648/I	1 5/8	3 1/2
5656/I	1	4
5672/I	2	5
5688/I	2	6
56104/I	2	7
56116/I	2	7 3/4
56128/I	2 5/16	8 1/2
56152/I	2 5/16	10
56188/I	2 5/16	12