

# Clamps

**ROYAL BRASS AND HOSE**

ITEM	PAGE #
<b>Clamps Standard Worm Gear</b>	
50 Series (.56" Width) .....	456
57 Series (.50" Width) .....	456
68 Series (.56" Width, Stainless Screw) .....	457
62 Series (.312" Width) .....	457
53 Series (.50" Width, Rubber Lined) .....	458
56 Series (.56" Width, Snap Lock) .....	458
<b>Band Clamps</b>	
Band-It, Jr. Automatic Locking - Center Punch	
Type 201 Stainless Steel .....	459
Type 201 Galvanized Carbon Steel .....	459
Center Punch Clamp Tool .....	459
<b>Band-It, Jr. Smooth Preformed Clamps</b>	
Type 201 Stainless Steel .....	460
Type 201 Galvanized Carbon Steel .....	460
<b>Band Clamps</b>	
Band .....	461
Type 201 Stainless Steel .....	461
Type 316 Stainless Steel .....	461
Band Clamp Tool .....	461
Buckles Type 201 Stainless Steel .....	461
<b>Ear Clamps</b>	
2-Ear (Zinc-Plated Steel) .....	461
<b>Steam &amp; Air</b>	
Heavy Duty Hose Clamps - Steam & Air	
2 Bolt .....	462
4 Bolt Stem .....	462
<b>"King" Clamps</b>	
"King" Single Bolt Clamps .....	462
"King" Double Bolt Clamps .....	463
<b>Accessories</b>	
Hose Clamps .....	463
T-Bolt Clamps .....	463
<b>Clamp Display</b>	
Clamp Display .....	464
Oetiker Clamp Kit .....	464

### How do you size a clamp?

Standard worm-gear clamps are sized according to standards established by the SAE.

#### **What is the SAE?**

The Society of Automotive Engineers is a one-stop resource for technical information and expertise used in designing, building, maintaining, and operating self-propelled vehicles for use on land or sea, in air or space.

#### **How does standard clamp sizing work?**

According to the SAE standards for hose clamping sizing, multiply desired outer diameter (in inches) by 16 to determine the mid-range nominal diameter.

For example:

If you need a clamp with a 2 inch diameter (2 x 16), you use a size 32 clamp.

(Clamp has a diameter of 1 9/16" to 2 1/2" with 2" mid-range.)

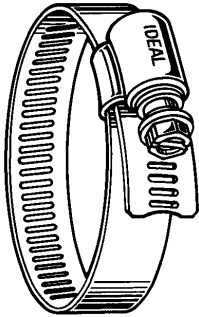
If you need a clamp with a 6 1/2" diameter (6.50 x 16), you use a size 104 clamp.

(Clamp has a diameter of 4 1/8" to 7" with 6 1/2" mid-range.)

**CLAMPS**

**STANDARD WORM GEAR**

**50 Series**  
(.56 WIDTH)

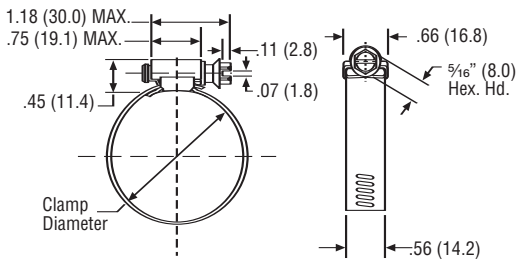


**FEATURES:**

- 5/16" hex head, open screw
- Stainless band and housing
- Zinc plated carbon steel screw

**APPLICATION:**

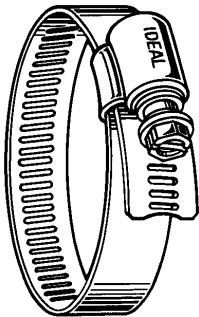
- Versatile Hy-Gear clamps are used from simple home and auto repair to heavy duty industrial uses



**SPECIFICATIONS**

RB&H #	MINIMUM (IN.)	MAXIMUM (IN.)
5006/I	3/8	7/8
5008/I	7/16	1
5010/I	1/2	1 1/8
5012/I	1/2	1 1/4
5016/I	3/4	1 1/2
5020/I	3/4	1 3/4
5024/I	1	2
5028/I	1 1/16	2 1/4
5032/I	1 9/16	2 1/2
5036/I	7/8	2 3/4
5040/I	1 1/2	3
5044/I	1 5/16	3 1/4
5048/I	1 3/8	3 1/2
5052/I	1 7/8	3 3/4
5056/I	2 1/8	4
5064/I	2 5/8	4 1/2
5072/I	3 1/8	5
5080/I	3 5/8	5 1/2
5088/I	4 1/4	6
5096/I	4 3/4	6 1/2
50104/I	4	7

**57 Series**  
(.50 WIDTH)

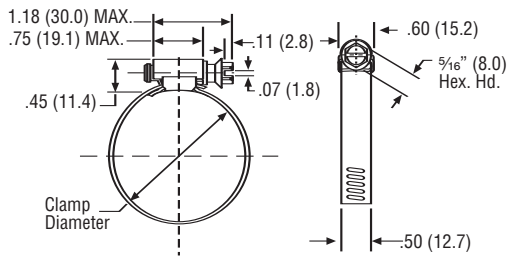


**FEATURES:**

- 5/16" hex head, open screw
- Stainless band and housing
- Zinc plated, yellow dichromate, carbon steel screw

**APPLICATION:**

- Most common home and automotive applications



**SPECIFICATIONS**

RB&H #	MINIMUM (IN.)	MAXIMUM (IN.)
5706/I	3/8	7/8
5708/I	7/16	1
5710/I	1/2	1 1/8
5712/I	1/2	1 1/4
5716/I	3/4	1 1/2
5720/I	3/4	1 3/4
5724/I	1	2
5728/I	1 1/16	2 1/4
5732/I	1 9/16	2 1/2
5736/I	7/8	2 3/4
5740/I	1 1/8	3
5744/I	1 5/16	3 1/4
5748/I	1 3/8	3 1/2
5752/I	1 7/8	3 3/4
5756/I	2 1/8	4
5764/I	2 5/8	4 1/2
5772/I	3 1/8	5
5780/I	3 5/8	5 1/2
5788/I	4 1/4	6
5796/I	4 3/4	6 1/2

Call for availability.

**CLAMPS**

**STANDARD WORM GEAR**

**SPECIFICATIONS**

RB&H #	MINIMUM (IN.)	MAXIMUM (IN.)
6806/1	3/8	7/8
6808/1	7/16	1
6810/1	1/2	1 1/8
6812/1	1/2	1 1/4
6816/1	3/4	1 1/2
6820/1	3/4	1 3/4
6824/1	1	2
6828/1	1 5/16	2 1/4
6832/1	1 9/16	2 1/2
6836/1	7/8	2 3/4
6840/1	1 1/8	3
6844/1	1 5/16	3 1/4
6848/1	1 9/16	3 1/2
6852/1	1 7/8	3 3/4
6856/1	2 1/8	4
6864/1	2 5/8	4 1/2
6872/1	3 1/8	5
6880/1	3 5/8	5 1/2
6888/1	4 1/4	6
6896/1	4 3/4	6 1/2
68104/1	4	7
68128/1	2 1/2	8 1/2
68152/1	2 1/2	10
68188/1	2 1/2	12 1/4
68236/1	2 1/2	15 1/4
68248/1	2 1/8	16

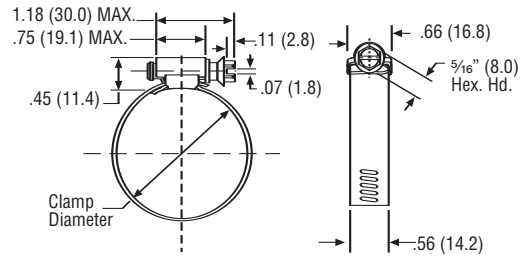
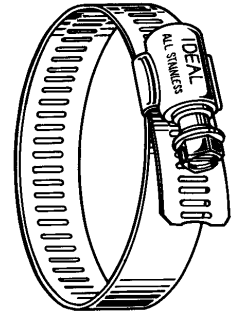
**68 Series**  
(.56 WIDTH)

**FEATURES:**

- 5/16" hex head, open screw
- Stainless band and housing
- Stainless screw

**APPLICATION:**

- Versatile Hy-Gear clamps are used from simple home and auto repair to heavy duty industrial uses



**SPECIFICATIONS**

RB&H #	MINIMUM (IN.)	MAXIMUM (IN.)
6202/1	1/4	5/8
6203/1	5/16	7/8
6204/1	5/8	1 1/4
6205/1	5/8	1 1/2
6220/1	3/4	1 3/4

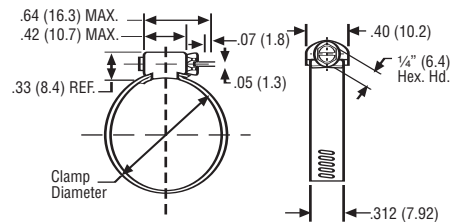
**62 Series**  
(.312 WIDTH)

**FEATURES:**

- 1/4" hex head, open screw
- Stainless band and housing
- Zinc plated carbon steel screw

**APPLICATION:**

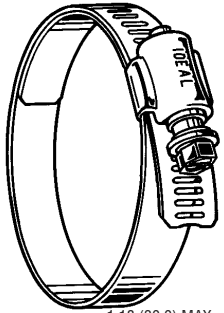
- Tiny, tough and precision engineered for use in such small hose applications as emission control, fuel lines, and vacuum hoses



**CLAMPS**

**STANDARD WORM GEAR**

**53 Series**  
(.50 WIDTH)

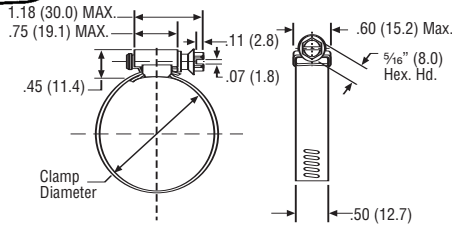


**FEATURES:**

- 5/16" hex head, open screw
- Lined worm drive for silicone rubber hose and other applications requiring a smooth clamping surface
- Stainless band and housing
- Carbon steel screw

**APPLICATION:**

- Specially designed for use with silicone rubber and other soft hose application



**SPECIFICATIONS**

RB&H #	MINIMUM (IN.)	MAXIMUM (IN.)
5306/I	1/2	7/8
5308/I	9/16	1
5310/I	3/4	1 1/8
5312/I	7/8	1 1/4
5316/I	1	1 1/2
5320/I	1 1/8	1 3/4
5324/I	1 1/4	2
5328/I	1 5/16	2 1/4
5332/I	1 9/16	2 1/8
5336/I	1 13/16	2 3/4
5340/I	2 1/16	3
5344/I	2 5/16	3 1/4
5348/I	2 9/16	3 1/2
5352/I	2 13/16	3 3/4
5356/I	3 1/16	4
5372/I	4 1/16	5

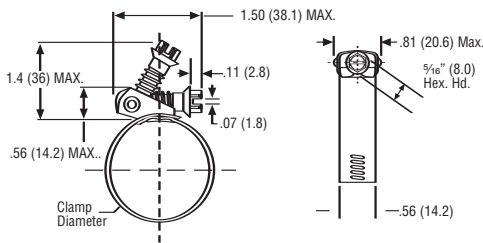
**56 Series**  
(.56 WIDTH)

**FEATURES:**

- Snaplock, 5/16" hex head, zinc plated, yellow dichromate, carbon steel
- Stainless steel band and housing- 9/16" wide
- Zinc plated, yellow dichromate, carbon steel screw

**APPLICATION:**

- For installation in "closed" systems where the clamp must be disengaged to be applied

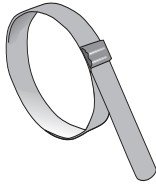


**SPECIFICATIONS**

RB&H #	MINIMUM (IN.)	MAXIMUM (IN.)
5612/I	1/2	1 1/4
5620/I	3/4	1 3/4
5628/I	1	2 1/4
5636/I	7/8	2 3/4
5648/I	1 5/8	3 1/2
5656/I	1	4
5672/I	2	5
5688/I	2	6
56104/I	2	7
56116/I	2	7 3/4
56128/I	2 5/16	8 1/2
56152/I	2 5/16	10
56188/I	2 5/16	12

**CLAMPS**

**BAND CLAMPS**



**Band-It, Jr. – Center Punch**  
AUTOMATIC LOCKING

**Stainless Steel**

3/8" WIDE CLAMP – .025" THICK  
5/8" WIDE CLAMP – .025" THICK

**Galvanized Carbon Steel**

3/8" WIDE CLAMP – .025" THICK  
5/8" WIDE CLAMP – .025" THICK

SPECIFICATIONS			
RB&H #	I.D. (IN.)	BAND (IN.)	PACKAGE QUANTITY
CP3S	1 3/16	3/8	100
CP311S	1 3/8	3/8	100
CP4S	1	5/8	100
CP5S	1 1/4	5/8	100
CP6S	1 1/2	5/8	100
CP7S	1 3/4	5/8	100
CP8S	2	5/8	100
CP9S	2 1/4	5/8	100
CP10S	2 1/2	5/8	50
CP11S	2 3/4	5/8	50
CP12S	3	5/8	50
CP14S	3 1/2	5/8	50
CP16S	4	5/8	25
CP18S	4 1/2	5/8	25
CP20S	5	5/8	25
CP24S	6	5/8	25
CP28S	7	5/8	25
CP32S	8	5/8	25

SPECIFICATIONS			
RB&H #	I.D. (IN.)	BAND (IN.)	PACKAGE QUANTITY
CP0S	1 3/16	3/8	100
CP311	1 3/8	3/8	100
CP04	1	5/8	100
CP05S	1 1/4	5/8	100
CP06S	1 1/2	5/8	100
CP07S	1 3/4	5/8	100
CP08S	2	5/8	100
CP09S	2 1/4	5/8	100
CP10	2 1/2	5/8	50
CP11	2 3/4	5/8	50
CP12	3	5/8	50
CP14	3 1/2	5/8	50
CP16	4	5/8	25
CP18	4 1/2	5/8	25
CP20	5	5/8	25
CP24	6	5/8	25
CP28	7	5/8	25
CP32	8	5/8	25

Used on C4 hose

SPECIFICATIONS	
RB&H #	SIZES (IN.)
T300	For 5/8" wide clamps

**Center Punch Clamp Tool**

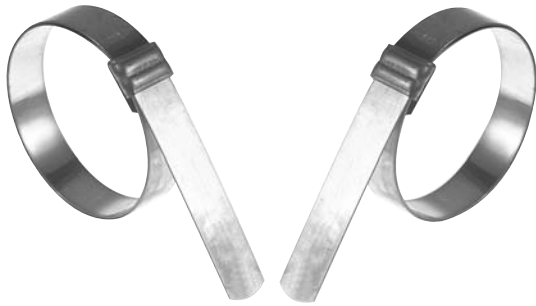


Hand held ratchet action tensioning.

**CLAMPS**

**BAND CLAMPS**

# Band-It, Jr. Smooth Preformed Clamps



Vibration resistant and requires no hammering or crimping. It automatically locks in one simple lever movement. Smooth clamp prevents leak paths. Gap-free which insures strong holding power. Use C002 tool.

RB&H # C002



## Type 201 Stainless Steel

## Galvanized Carbon Steel

**SPECIFICATIONS**

RB&H #	CLAMP I.D. X BAND WIDTH (IN.)	THICKNESS (IN.)	PACKAGE QUANTITY
JS201	1 <sup>3</sup> / <sub>8</sub> x 3 <sup>3</sup> / <sub>8</sub>	.025	100
JS202	1 3 <sup>3</sup> / <sub>8</sub> x 3 <sup>3</sup> / <sub>8</sub>	.025	100
JS205	1 1 <sup>1</sup> / <sub>2</sub> x 5 <sup>5</sup> / <sub>8</sub>	.030	100
JS207	2 x 5 <sup>5</sup> / <sub>8</sub>	.030	100
JS209	2 1 <sup>1</sup> / <sub>2</sub> x 5 <sup>5</sup> / <sub>8</sub>	.030	100
JS210	2 3 <sup>3</sup> / <sub>4</sub> x 3 <sup>3</sup> / <sub>4</sub>	.030	50
JS211	3 x 3 <sup>3</sup> / <sub>4</sub>	.030	50
JS213	4 x 3 <sup>3</sup> / <sub>4</sub>	.030	25
JS215	5 x 3 <sup>3</sup> / <sub>4</sub>	.030	25
JS216	6 x 3 <sup>3</sup> / <sub>4</sub>	.030	25
JS218	7 x 3 <sup>3</sup> / <sub>4</sub>	.030	25

**SPECIFICATIONS**

RB&H #	CLAMP I.D. X BAND WIDTH (IN.)	THICKNESS (IN.)	PACKAGE QUANTITY
JS301	1 <sup>3</sup> / <sub>8</sub>	.025	100
JS302	1 3 <sup>3</sup> / <sub>8</sub> x 3 <sup>3</sup> / <sub>8</sub>	.025	100
JS305	1 1 <sup>1</sup> / <sub>2</sub> x 5 <sup>5</sup> / <sub>8</sub>	.030	100
JS307	2 x 5 <sup>5</sup> / <sub>8</sub>	.030	100
JS309	2 1 <sup>1</sup> / <sub>2</sub> x 5 <sup>5</sup> / <sub>8</sub>	.030	100
JS310	2 3 <sup>3</sup> / <sub>4</sub> x 3 <sup>3</sup> / <sub>4</sub>	.030	50
JS311	3 x 3 <sup>3</sup> / <sub>4</sub>	.030	50
JS313	4 x 3 <sup>3</sup> / <sub>4</sub>	.030	25
JS315	5 x 3 <sup>3</sup> / <sub>4</sub>	.030	25
JS316	6 x 3 <sup>3</sup> / <sub>4</sub>	.030	25
JS318	7 x 3 <sup>3</sup> / <sub>4</sub>	.030	25

**CLAMPS**

**BAND CLAMPS**



Band

**Stainless Steel**

**Type 316 Stainless Steel**

SPECIFICATIONS			
RB&H #	BAND WIDTH (IN.)	THICKNESS (IN.)	STANDARD PACKAGE QUANTITY
C202	1/4	.020	100
C203	3/8	.025	100
C204	1/2	.030	100
C205	5/8	.030	100
C206	3/4	.030	100

SPECIFICATIONS			
RB&H #	BAND WIDTH (IN.)	THICKNESS (IN.)	STANDARD PACKAGE QUANTITY
C403	3/8	.025	100
C404	1/2	.030	100
C405	5/8	.030	100
C406	3/4	.030	100

SPECIFICATIONS		
RB&H #	DESCRIPTION	SIZE (IN.)
F100/D		3/8 to 3/4
C001	2,4000 lb. tension	



**Band Clamp Tool**

SPECIFICATIONS		
RB&H #	BAND WIDTH (IN.)	STANDARD PACKAGE QUANTITY
C252	1/4	100
C253	3/8	100
C254	1/2	100
C255	5/8	100
C256	3/4	100

**Buckles  
Stainless Steel**



**EAR CLAMPS**

SPECIFICATIONS				
RB&H #	REFERENCE #	NOMINAL SIZE (IN.)	DIMENSIONS (IN.)	
			CLOSED	OPEN
CC-3	10100002	3/16	0.118	0.197
CC-4	10100004	1/4	0.197	0.276
CC-5	10100006	5/16	0.276	0.354
CC-6	10100011	3/8	0.315	0.433
CC-8	10100016	1/2	0.433	0.512
CC-9	10100019	9/16	0.512	0.591
CC-10	10100024	5/8	0.591	0.708
CC-12	10100027	3/4	0.669	0.787
CC-13	10100029	13/16	0.748	0.866
CC-14	10100030	7/8	0.787	0.905
CC-15	10100032	15/16	0.866	0.984
CC-16	10100034	1	0.905	1.063
CC-17	10100035	1 1/16	0.984	1.102
CC-18	10100037	1 1/8	1.063	1.220
CC-21	10100041	1 5/16	1.220	1.339
CC-23	10100043	1 7/16	1.339	1.457
CC-24	10100045	1 1/2	1.457	1.575
CC-26	10100047	1 5/8	1.575	1.693
CC-28	10100049	1 3/4	1.693	1.811

**2-Ear  
(ZINC-PLATED STEEL)**



Assortment on page 464

**CLAMPS**

**STEAM & AIR**

**Heavy Duty Hose Clamps - Steam & Air**

**2 Bolt**



**4 Bolt Stem**

The bolts used in the "Boss" interlocking clamps are not standard bolts. These bolts can be re-torqued, but it is not recommended that they be reused. Do not lubricate nuts and bolts.

**SPECIFICATIONS**

RB&H #	SIZE (IN.)	O.D. FROM: (IN.)	O.D. TO: (IN.)	TORQUE
CD/D	3/8	44/64	56/64	6
DD/D	1/2	52/64	60/64	6
B-4/D	1/2	60/64	1 4/64	12
B-5/D	1/2	1 4/64	1 12/64	12
BU-9S/D	3/4	1 10/64	1 18/64	21
BU-9/D	3/4	1 12/64	1 20/64	21
B-9/D	3/4	1 20/64	1 32/64	21
B-10/D	3/4	1 32/64	1 44/64	21
BU-14/D	1	1 34/64	1 46/64	21
B-14/D	1	1 44/64	1 60/64	21
B-15/D	1	1 60/64	2 8/64	21
BU-18/D	1 1/4	1 32/64	1 50/64	40
BU-19/D	1 1/4	1 50/64	2 8/64	40
B-19/D	1 1/4	2 8/64	2 24/64	40
BU-22/D	1 1/2	1 52/64	2	40
B-22/D	1 1/2	2	2 14/64	40
BU-24/D	1 1/2	2 12/64	2 24/64	40

**"KING" CLAMPS**

**"King" Single Bolt Clamps**



**SPECIFICATIONS**

RB&H #	FIT HOSE O.D. (IN.)	
	FROM:	TO:
2/D	7/8	1
3/D	31/32	1 1/8
4/D	1 1/16	1 3/16
5/D	1 5/32	1 1/4
6/D	1 1/4	1 3/8
7/D	1 11/32	1 7/16
8/D	1 7/16	1 9/16
9/D	1 17/32	1 11/16
10/D	1 21/32	1 3/4
11/D	1 3/4	1 7/8
12/D	1 7/8	2 1/32
13/D	2	2 1/8
14/D	2 1/8	2 9/32
15/D	2 1/4	2 13/32
16/D	2 3/8	2 1/2
17/D	2 1/2	2 5/8
18/D	2 5/8	2 7/8
19/D	2 7/8	3 1/16
20/D	3 1/16	3 1/4
21/D	3 1/4	3 7/16
22/D	3 7/16	3 5/8
23/D	3 5/8	3 13/16
24/D	3 13/16	4 1/8
25/D	4 1/8	4 5/16
26/D	4 1/4	4 1/2



**CLAMPS**

**“KING” CLAMPS**

**SPECIFICATIONS**

RB&H #	FIT HOSE O.D. (IN.)	
	FROM:	TO:
400/D	3 1/2	4
525/D	4 3/16	5
550/D	5	5 1/2
675/D	6 1/8	6 7/8
769/D	6 15/16	7 5/8
875/D	8 1/4	8 7/8

**“King” Double Bolt Clamps**



**Accessories**

**SPECIFICATIONS**

RB&H #	CLAMPING DIAMETER (IN.)	BOLT HOLE (IN.)
HK0509	1/4	1/4
HK0709	3/8	9/32
HK0809	7/16	9/32
HK0913	5/8	13/32
HK1013	1/2	13/32
HK1113	5/8	13/32
HK1213	1 1/16	13/32
HK1313	3/4	13/32
HK1413	13/16	13/32
HK1513	7/8	13/32
HK1613	15/16	13/32
HK1713	1	13/32
HK1813	1 1/16	13/32
HK1913	1 1/8	13/32
HK2017	1 3/16	17/32
HK2117	1 1/4	17/32
HK2317	1 3/8	17/32
HK2517	1 1/2	17/32
HK2617	1 9/16	17/32
HK2917	1 3/4	17/32
HK3117	1 7/8	17/32
HK3217	1 15/16	17/32
HK3317	2	17/32
HK3417	2 5/32	17/32
HK3817	2 21/32	17/32

**Hose Clamps**



**FEATURES:**

- Plastic-covered
- For all types of hose and tubing

**APPLICATION:**

- Hose support for long hose lengths
- Used to insure proper hose routing where abrasion, moving parts or heat may exist

**SPECIFICATIONS**

RB&H #	SIZE (IN.)	INCH RANGE (IN.)
TBC150/D	1 1/2	1.375 - 1.5625
TBC200/D	2	1.875 - 2.0625
TBC250/D	2 1/2	2.375 - 2.5625
TBC300/D	3	2.7813 - 3.0625
TBC400/D	4	3.7813 - 4.0625
TBC600/D	6	5.7813 - 6.0625

**T-Bolt Clamps**



Stainless steel band, carbon steel bolt.  
3/4" wide band, Torque rating 70 in/lbs.

**CLAMPS**

**CLAMP DISPLAY**

# Clamp Display

RB&H # CLAMP-DISPLAY



KIT CONTENTS	MINIMUM DIAMETER (IN.)	MAXIMUM DIAMETER (IN.)	QUANTITY
6202/1	1/4	5/8	10
6203/1	5/16	7/8	10
5010/1	1/2	1 1/8	10
5016/1	3/4	1 1/2	10
5020/1	3/4	1 3/4	10
5024/1	1	2	10
5036/1	7/8	2 3/4	10

**THE DISPLAY FEATURES:**

- 70 worm drive clamps
- compact wall mounted or counter display

# Oetiker Clamp Kit

RB&H # 18500056 OETIKER CLAMP KIT



RB&H #	QUANTITY	SIZE (IN.)
10100008	15	5/16
10100013	15	7/16
10100016	15	1/2
10100019	15	9/16
10100024	15	5/8
10100027	12	3/4
10110030	12	7/8
10100032	12	1 1/16
10100034	12	1

**FEATURES:**

- 1 pair of installation/removal pinchers
- 1 plastic case

Oetiker 2 ear clamps are especially suited for industrial use and with heavily vibrating equipment. Widely used for maintenance and OEM applications, Rubber hose, plastic tubing, coaxial and electrical cable, rope, etc. are all easily clamped. Used on air, fluid, gas and steam lines. Also suitable for low pressure hydraulic applications.