

# Accessories

## *ROYAL BRASS AND HOSE*

ITEM	PAGE #
Electrical Wire & Terminal .....	435-442
Gauges .....	443-446
Valves .....	447-454
Clamps .....	455-464
Cable Ties .....	465-467

## Electric Wire & Terminal

ITEM	PAGE #
<b>Wire</b>	
GPT Primary Wire	
500' Spool Banded and Wrapped Special Order .....	436
100' Spool Banded and Wrapped .....	436
<b>Packaged Wire Terminals</b>	
<b>Butt Connectors</b>	
Vinyl .....	436
Nylon .....	436
<b>Ring Connectors</b>	
Vinyl .....	437
Nylon .....	437
<b>Push-On Connectors</b>	
Vinyl .....	437
<b>Fully Insulated Push-On Connectors</b>	
Nylon .....	438
<b>Bullet Connectors</b>	
Vinyl .....	438
Nylon Male .....	438
<b>Spade Connectors</b>	
Vinyl .....	439
Nylon .....	439
<b>Closed End Connectors</b>	
Nylon .....	439
<b>Quick Splicers</b>	
Vinyl .....	439
Hard Wire Nuts .....	439
<b>Assortment Kits</b>	
Wire Terminal Assortment Kits .....	440
Shrink Tube Assortment Kits .....	440
<b>Fuses</b>	
<b>Packged Fuses</b>	
Standard Blade .....	441
Micro Blade .....	441
Max Blade .....	442
Glass Style .....	442
Fuse Assortment Kits .....	442

**ELECTRIC WIRE & TERMINAL**

**WIRE**

**GPT Primary Wire**

**500' Spool  
Banded and  
Wrapped**  
SPECIAL ORDER



**100' Spool  
Banded and  
Wrapped**



**SPECIFICATIONS**

GAUGE	SPOOL LENGTH (FT.)	PRODUCT I.D.						
		(RED) RB&H #	(BLUE) RB&H #	(GREEN) RB&H #	(YELLOW) RB&H #	(BLACK) RB&H #	(BROWN) RB&H #	(WHITE) RB&H #
18	100	GP118A-10	GP118A-20	GP118A-30	GP118A-40	GP118A-50	GP118A-60	GP118A-70
18	500	GP118X-10	GP118X-20	GP118X-30	GP118X-40	GP118X-50	GP118X-60	GP118X-70
16	100	GP116A-10	GP116A-20	GP116A-30	GP116A-40	GP116A-50	GP116A-60	GP116A-70
16	500	GP116X-10	GP116X-20	GP116X-30	GP116X-40	GP116X-50	GP116X-60	GP116X-70
14	100	GP114A-10	GP114A-20	GP114A-30	GP114A-40	GP114A-50	GP114A-60	GP114A-70
14	500	GP114X-10	GP114X-20	GP114X-30	GP114X-40	GP114X-50	GP114X-60	GP114X-70
12	100	GP112A-10	GP112A-20	GP112A-30	GP112A-40	GP112A-50	GP112A-60	GP112A-70
12	500	GP112X-10	GP112X-20	GP112X-30	GP112X-40	GP112X-50	GP112X-60	GP112X-70
10	100	GP110A-10	GP110A-20	GP110A-30	GP110A-40	GP110A-50	GP110A-60	GP110A-70
10	500	GP110X-10	GP110X-20	GP110X-30	GP110X-40	GP110X-50	GP110X-60	GP110X-70

Several additional wire colors available by special order.  
Sold in spool lengths only.

**PACKAGED WIRE TERMINALS**

**Butt Connectors**

**Vinyl**



PACKAGE QUANTITY (PCS.)	PRODUCT I.D.		
	22-16 WIRE GAUGE RED RB&H #	16-14 WIRE GAUGE BLUE RB&H #	12-10 WIRE GAUGE YELLOW RB&H #
50	IBCR-W	IBCB-W	IBCY-W

Sold in packages of 50 (1=50).

**Nylon**



PACKAGE QUANTITY (PCS.)	PRODUCT I.D.		
	22-16 WIRE GAUGE RED RB&H #	16-14 WIRE GAUGE BLUE RB&H #	12-10 WIRE GAUGE YELLOW RB&H #
50	NBCR-W	NBCB-W	NBCY-W

**ELECTRIC WIRE & TERMINAL**

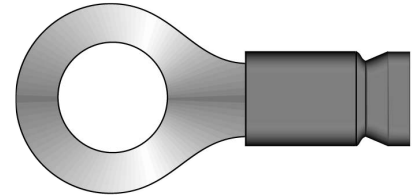
**PACKAGED WIRE TERMINALS**

# Ring Connectors

SPECIFICATIONS			
RING SIZE (IN.)	PRODUCT I.D.		
	22-16 WIRE GAUGE RED RB&H #	16-14 WIRE GAUGE BLUE RB&H #	12-10 WIRE GAUGE YELLOW RB&H #
1/32	FERR4-W	FERB4-W	N/A
9/32	FERR6-W	FERB6-W	FERY6-W
3/8	FERR8-W	FERB8-W	FERY8-W
19/32	FERR10-W	FERB10-W	FERY10-W
1/4	FERR14-W	FERB14-W	FERY14-W
5/16	FERR516-W	FERB516-W	FERY516-W
3/8	FERR38-W	FERB38-W	FERY38-W

All terminals are available in quantities of 1,000 by special order.  
Sold in packages of 50 (1=50).

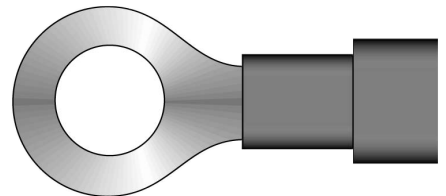
Vinyl



SPECIFICATIONS			
RING SIZE (IN.)	PRODUCT I.D.		
	22-16 WIRE GAUGE RED RB&H #	16-14 WIRE GAUGE BLUE RB&H #	12-10 WIRE GAUGE YELLOW RB&H #
1/32	NRR4-W	NRB4-W	N/A
9/32	NRR6-W	NRB6-W	NRV6-W
3/8	NRR8-W	NRB8-W	NRV8-W
19/32	NRR10-W	NRB10-W	NRV10-W
1/4	NRR14-W	NRB14-W	NRV14-W
5/16	NRR516-W	NRB516-W	NRV516-W
3/8	NRR38-W	NRB38-W	NRV38-W

All terminals are available in quantities of 1,000 by special order.

Nylon



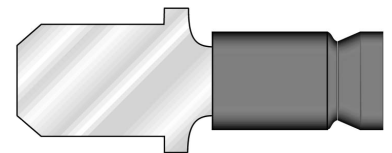
# Push-On Connectors

SPECIFICATIONS			
SIZE (IN.)	PRODUCT I.D.		
	22-16 WIRE GAUGE RED RB&H #	16-14 WIRE GAUGE BLUE RB&H #	12-10 WIRE GAUGE YELLOW RB&H #
.250	FEMR-W	FEMB-W	FEMY-W
.250	FEFR-W	FEFB-W	FEFY-W
.187	IMR.187-W	IMB.187-W	N/A
.187	IFR.187-W	IFB.187-W	N/A

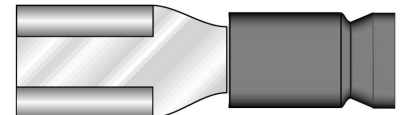
Sold in packages of 50 (1=50).

Vinyl

FEMALE



MALE

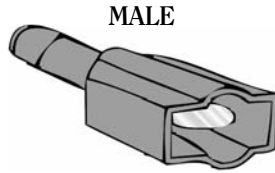


**ELECTRIC WIRE & TERMINAL**

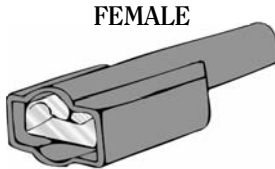
**PACKAGED WIRE TERMINALS**

**Fully Insulated Push-On Connectors**

**Nylon**



MALE



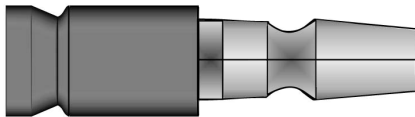
FEMALE

SPECIFICATIONS			
SIZE (IN.)	PRODUCT I.D.		
	22-16 WIRE GAUGE RED RB&H #	16-14 WIRE GAUGE BLUE RB&H #	12-10 WIRE GAUGE YELLOW RB&H #
.250	FIMR-W	FIMB-W	FIMY-W
.250	FIFR-W	FIFB-W	FIFY-W

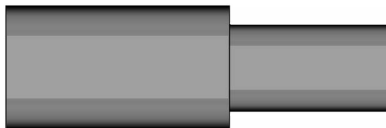
Sold in packages of 50 (1=50).

**Bullet Connectors**

**Vinyl**



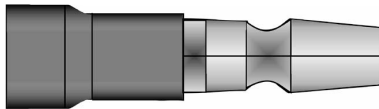
SPECIFICATIONS		
SIZE (IN.)	PRODUCT I.D.	
	22-16 WIRE GAUGE RED RB&H #	16-14 WIRE GAUGE BLUE RB&H #
.157	IBR-W	FEBB-W



SPECIFICATIONS		
SIZE (IN.)	PRODUCT I.D.	
	22-16 WIRE GAUGE RED RB&H #	16-14 WIRE GAUGE BLUE RB&H #
.157	FIBR-W	FIBB-W

Sold in packages of 50 (1=50).

**Nylon Male**



SPECIFICATIONS	
PRODUCT I.D.	
22-16 WIRE GAUGE RED RB&H #	16-14 WIRE GAUGE BLUE RB&H #
NBR-W	NBB-W

**ELECTRIC WIRE & TERMINAL**

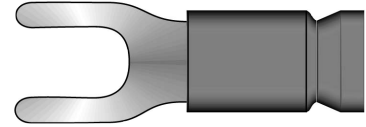
**PACKAGED WIRE TERMINALS**

**Spade Connectors**

<b>SPECIFICATIONS</b>			
SIZE (IN.)	PRODUCT I.D.		
	22-16 WIRE GAUGE RED RB&H #	16-14 WIRE GAUGE BLUE RB&H #	12-10 WIRE GAUGE YELLOW RB&H #
9/32	FESR6-W	FESB6-W	FESY6-W
9/32	FESR8-W	FESB8-W	FESY8-W
10/32	FESR10-W	FESB10-W	FESY10-W

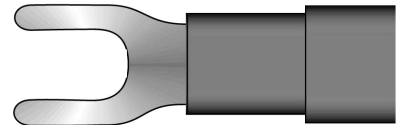
Sold in packages of 50 (1=50).

Vinyl



<b>SPECIFICATIONS</b>			
SIZE (IN.)	PRODUCT I.D.		
	22-16 WIRE GAUGE RED RB&H #	16-14 WIRE GAUGE BLUE RB&H #	12-10 WIRE GAUGE YELLOW RB&H #
9/32	NSR6-W	NSB6-W	NSY6-W
9/32	NSR8-W	NSB8-W	NSY8-W
10/32	NSR10-W	NSB10-W	NSY10-W

Nylon

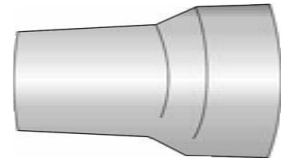


**Closed End Connectors**

<b>SPECIFICATIONS</b>		
PRODUCT I.D.		
22-16 WIRE GAUGE RED RB&H #	16-14 WIRE GAUGE BLUE RB&H #	12-10 WIRE GAUGE YELLOW RB&H #
CECR-W	CECB-W	CECY-W

Sold in packages of 50 (1=50).

Nylon

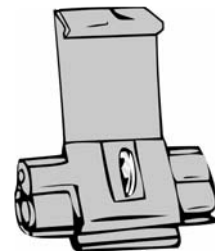


**Quick Splicers**

<b>SPECIFICATIONS</b>			
PRODUCT I.D.			
22-16 WIRE GAUGE RED RB&H #	16-14 WIRE GAUGE BLUE (CLOSED) RB&H #	16-14 WIRE GAUGE WHITE (OPEN) RB&H #	12-10 WIRE GAUGE YELLOW RB&H #
QSRI-W	QSBI-W	QSWI-W	QSYI-W

Sold in packages of 50 (1=50).

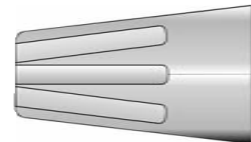
Vinyl



<b>SPECIFICATIONS</b>				
PRODUCT I.D.				
SMALLEST (GRAY) RB&H #	SMALL (BLUE) RB&H #	MEDIUM (ORANGE) RB&H #	LARGE (YELLOW) RB&H #	X-LARGE (RED) RB&H #
WNHG-W	WNHB-W	WNHO-W	WNHY-W	WNHR-W

All terminals are available in quantities of 1,000 by special order  
Sold in packages of 50 (1=50).

Hard Wire Nuts



**ELECTRIC WIRE & TERMINAL**

**ASSORTMENT KITS**

**Wire Terminal Assortment Kits**



**RB&H # WNA110**  
110 piece hard wire nut assortment kit



**RB&H # TP400-S**  
Packaged American made "BEST" terminal plier



**RB&H # WNA370**  
370 piece hard wire nut assortment kit



**RB&H # TK69X2**  
(2) 69 piece vinyl terminal assortment kits



**RB&H # TK175**  
175 piece vinyl terminal assortment kit



**RB&H # TK360**  
360 piece vinyl terminal assortment kit



**RB&H # TK430X**  
430 piece vinyl terminal assortment kit



**RB&H # TK130N**  
130 piece nylon terminal assortment kit



**RB&H # TK360N**  
360 piece nylon terminal assortment kit



**RB&H # TKHS320X**  
320 piece heat shrink terminal assortment kit

**ELECTRIC WIRE & TERMINAL**

**ASSORTMENT KITS**

**Shrink Tube Assortment Kits**



**PART # STK38**

38 (6") piece PVC shrink tubing assortment kit



**PART # STKPOD24**

24 (6") piece dual wall polyolefin heat shrink tubing with mastic (glue) on inner wall

**FUSES**

**Packaged Fuses**

**SPECIFICATIONS**

PACKAGE QUANTITY (PCS.)	PRODUCT I.D.							
	3 AMP RB&H #	5 AMP RB&H #	7.5 AMP RB&H #	10 AMP RB&H #	15 AMP RB&H #	20 AMP RB&H #	25 AMP RB&H #	30 AMP RB&H #
5	ATC3	ATC5	ATC7.5	ATC10	ATC15	ATC20	ATC25	ATC30
100	ATC3F	ATC5F	ATC7.5F	ATC10F	ATC15F	ATC20F	ATC25F	ATC30F

Fuses packaged in 100 count bags available only by special order.

**Standard Blade**



**SPECIFICATIONS**

PACKAGE QUANTITY (PCS.)	PRODUCT I.D.							
	3 AMP RB&H #	5 AMP RB&H #	7.5 AMP RB&H #	10 AMP RB&H #	15 AMP RB&H #	20 AMP RB&H #	25 AMP RB&H #	30 AMP RB&H #
5	ATCM3	ATCM5	ATCM7.5	ATCM10	ATCM15	ATCM20	ATCM25	ATCM30
100	ATCM3F	ATCM5F	ATCM7.5F	ATCM10F	ATCM15F	ATCM20F	ATCM25F	ATCM30F

Fuses packaged in 100 count bags available only by special order.

**Micro Blade**



**NOTE:** Always order fuses by the number of packages, not by the total number of fuses.

**ELECTRIC WIRE & TERMINAL**

**FUSES**

**Max Blade**



PACKAGE QUANTITY (PCS.)	PRODUCT I.D.				
	20 AMP RB&H #	30 AMP RB&H #	40 AMP RB&H #	50 AMP RB&H #	60 AMP RB&H #
1	ATCMAX20	ATCMAX30	ATCMAX40	ATCMAX50	ATCMAX60

**Glass Style**



PACKAGE QUANTITY (PCS.)	PRODUCT I.D.							
	2 AMP RB&H #	5 AMP RB&H #	7.5 AMP RB&H #	10 AMP RB&H #	15 AMP RB&H #	20 AMP RB&H #	25 AMP RB&H #	30 AMP RB&H #
5	AGC2	AGC5	AGC7.5	AGC10	AGC15	AGC20	AGC25	AGC30
100	AGC2F	AGC5F	AGC7.5F	AGC10F	AGC15F	AGC20F	AGC25F	AGC30F

Fuses packaged in 100 count bags available only by special order

**NOTE:** Always order fuses by the number of packages, not by the total number of fuses

**Fuse Assortment Kits**



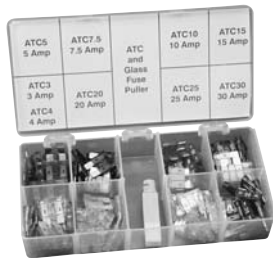
**RB&H # ATCMF40**  
40 piece micro blade assortment



**RB&H # ATCF40**  
40 piece standard blade assortment



**RB&H # AGCF60**  
60 piece AGC glass fuse assortment



**RB&H # ATCF100**  
100 piece standard blade fuse assortment kit with puller



**RB&H # AGCF120**  
120 piece AGC glass fuse assortment kit with puller



**RB&H # ATCF300**  
300 piece fuse assortment. Contains glass, mini, maxi, and standard fuses.