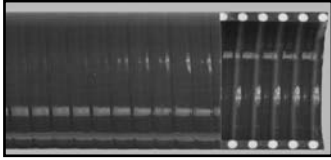


**INDUSTRIAL HOSE & FITTINGS**

**HOSE**

**Green PVC Suction**

SOLID GREEN OR CLEAR PVC BODY



APPLICATION: PVC Water Suction

TUBE: PVC

COVER: Embedded rigid PVC helix

TEMPERATURE: FULL Vacuum at 70°F

COUPLINGS: Pin lug, cam & groove, king combination (pipe thread).

**SPECIFICATIONS**

I.D. (IN.)	GREEN RB&H #	CLEAR RB&H #	PSI	MINIMUM BEND RADIUS	LENGTH (FT.)
¾	PVC-G/S-3/4	112CL-¾	130	3.25	100
1	PVC-G/S-1	112CL-1	114	4.3	100
1 ¼	PVC-G/S-1-1/4	112CL-1 ¼	100	5.1	100
1 ½	PVC-G/S-1-1/2	112CL-1 ½	90	6.1	100
2	PVC-G/S-2	112CL-2	76	8.5	100
3	PVC-G/S-3	112CL-3	62	13.2	100
4	PVC-G/S-4	112CL-4	57	17.7	100
6	PVC-G/S-6	112CL-6	47	29.5	100

**Green PVC Suction Hose Assemblies**

SINGLE BAND ASSEMBLIES SIZES ¾" - 1 ½"

**Cam & Groove Aluminum**

FEMALE X FEMALE (TYPE C TO TYPE C)

**SPECIFICATIONS**

I.D. (IN.)	RB&H # 20' ASSEMBLY	RB&H # 25' ASSEMBLY
¾	PVC-3/4-CCX20	PVC-3/4-CCX25
1	PVC-1-CCX20	PVC-1-CCX25
1 ½	PVC-1-1/2-CCX20	PVC-1-1/2-CCX25
2	PVC-2-CCX20	PVC-2-CCX25
3	PVC-3-CCX20	PVC-3-CCX25
4	PVC-4-CCX20	PVC-4-CCX25

DOUBLE BAND ASSEMBLIES SIZES 2" - 4"

**King Combination**

MALE PIPE X MALE PIPE

**SPECIFICATIONS**

I.D. (IN.)	RB&H # 20' ASSEMBLY	RB&H # 25' ASSEMBLY
¾	PVC-3/4-STCX20	PVC-3/4-STCX25
1	PVC-1-STCX20	PVC-1-STCX25
1 ½	PVC-1-1/2-STCX20	PVC-1-1/2-STCX25
2	PVC-2-STCX20	PVC-2-STCX25
3	PVC-3-STCX20	PVC-3-STCX25
4	PVC-4-STCX20	PVC-4-STCX25

**Cam & Groove Aluminum**

FEMALE X MALE (TYPE C TO TYPE E)

**SPECIFICATIONS**

I.D. (IN.)	RB&H # 20' ASSEMBLY	RB&H # 25' ASSEMBLY
¾	PVC-3/4-CEX20	PVC-3/4-CEX25
1	PVC-1-CEX20	PVC-1-CEX25
1 ½	PVC-1-1/2-CEX20	PVC-1-1/2-CEX25
2	PVC-2-CEX20	PVC-2-CEX25
3	PVC-3-CEX20	PVC-3-CEX25
4	PVC-4-CEX20	PVC-4-CEX25

**Pin Lug Short Shank**

FEMALE X MALE

(STRAIGHT IRON PIPE THREAD)

**SPECIFICATIONS**

I.D. (IN.)	RB&H # 20' ASSEMBLY	RB&H # 25' ASSEMBLY
1 ½	PVC-1-1/2-BASX20	PVC-1-1/2-BASX25
2	PVC-2-BASX20	PVC-2-BASX25
3	PVC-3-BASX20	PVC-3-BASX25
4	PVC-4-BASX20	PVC-4-BASX25