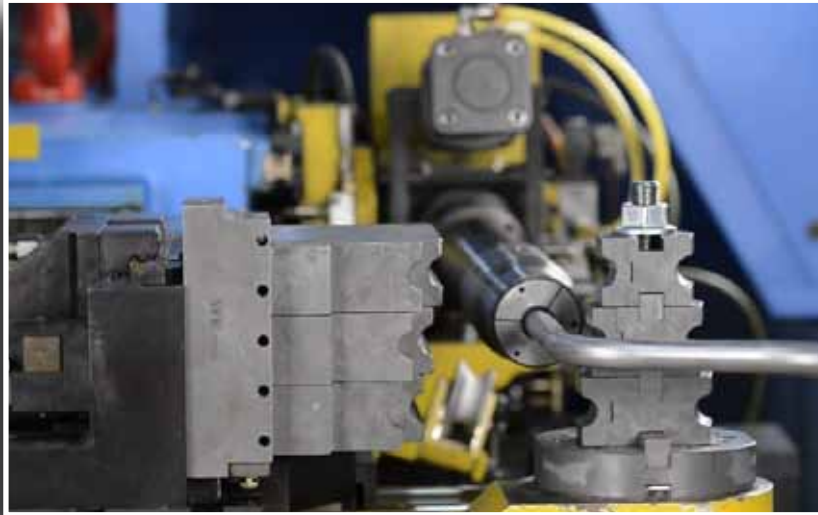


Royal Brass and Hose is your Full Service Tube Bending Specialist



Royal Brass and Hose offers a full service tube bending fabrication process that is capable of meeting the demanding needs required by our customers. Our state-of-the-art equipment and skilled technicians provide a procedural workflow that ensures accurate tube bending and precise end forms for each produced part.

With our flexible manufacturing process we are able to provide short lead times and competitive prices on both high and low volume orders.

Process Capabilities

Stocked Material Options:

- Stainless Steel
- ZN-CR Plated Steel
- Carbon Steel
- Aluminum
- Copper
- Brake Line
- Special order material available upon request

End Forming Options:

- Deburred
- Brazed
- Flared
- Flat Face Parflange
- Beaded

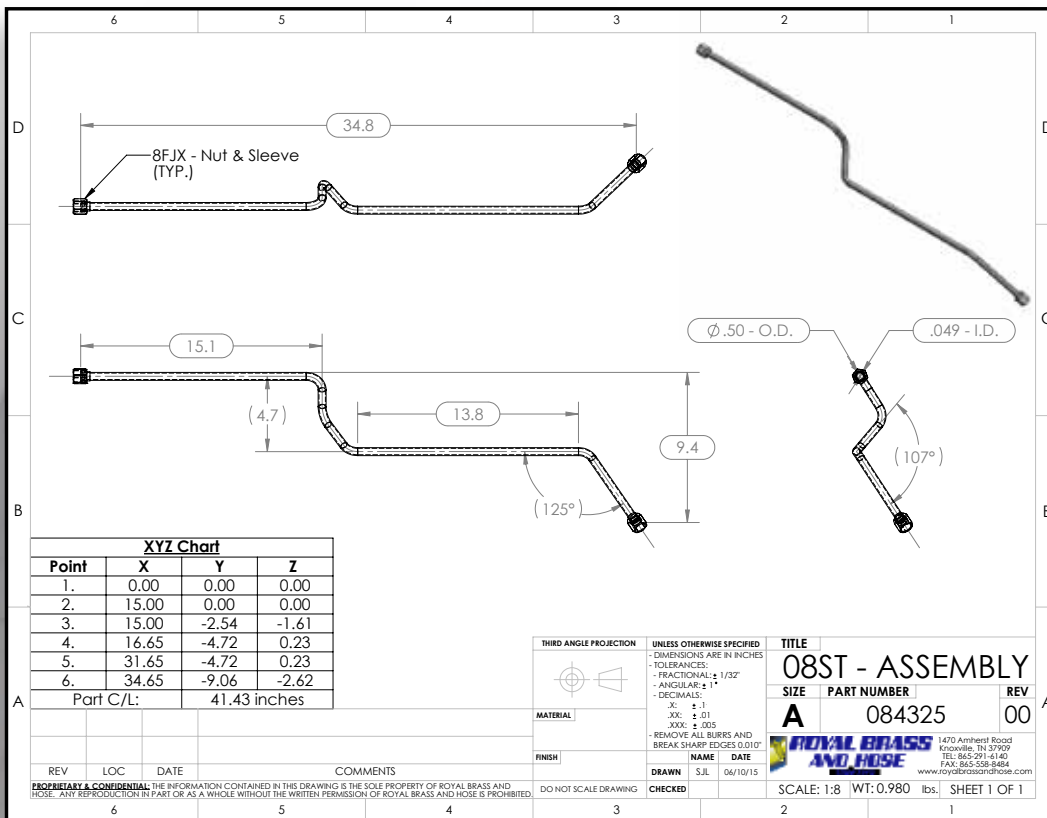
Workpiece Capacity:

- **Round Tube:** 3/16" (0.187") x 0.035" wall through 1-1/4" (1.25") x 0.109" wall tubing.

Testing:

- We offer non-destructive and destructive testing for finished parts and assemblies.





Royal Brass and Hose is able to take your samples or rough sketches and provide you with a finished CAD drawing for your records.

Do you want to outfit your equipment with tubing?

Provide us with samples, drawings, coordinates, or simple hand sketches of what you require and we will fabricate assemblies to print when possible or supply a marked up copy of any necessary deviations for customer approval before fabrication starts.

Do you need assistance with determining the proper tube design or pathway?

Experienced professionals from Royal Brass and Hose will help design a system that meets your performance specifications and budget.

Royal Brass and Hose currently serves the construction, airline ground support, agricultural, forestry, and automotive industries. *We appreciate the opportunity to serve you too!*

End Forming - Flare Types



JIC 37° Flare



SAE 45° Double Flare



Par Flange Flat Face



Bead



Bubble Flare